



KITCHENS



NEW ARRIVALS

The new design represents a new experience, low-key luxury shows style, gentle and elegant taste of life, and provides a better quality experience.



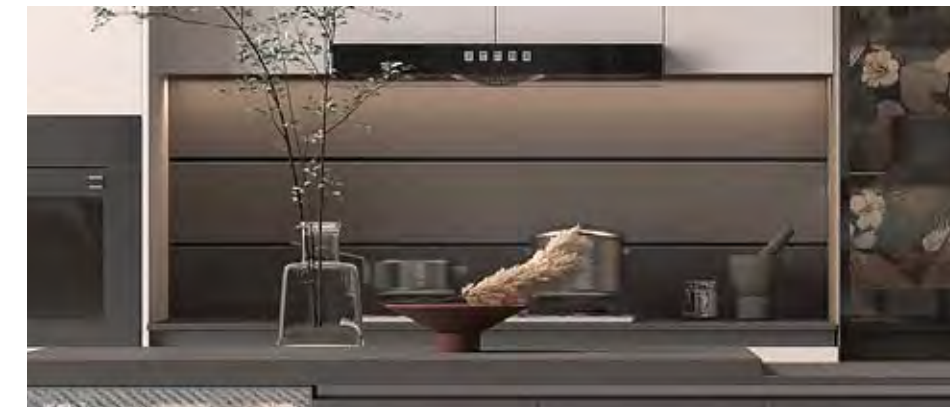
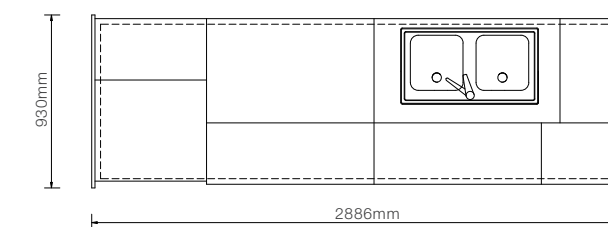
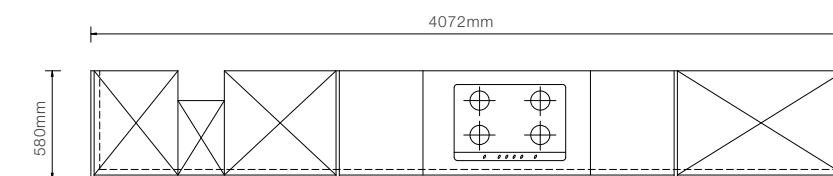
YUNXI

BLCC23002

Door Style: YMC003

Door Finish: UV Lacquer PWMC0130, BWMC0015

Countertop: PWTE0049



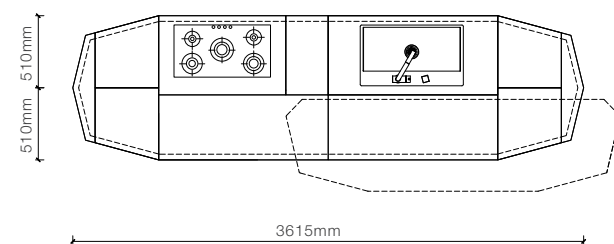
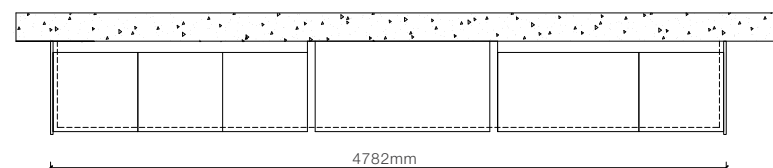
STINDEE

BLCC23070

Door Style: YMK281A, YMK281, YMK287, YMK288

Door Finish: Lacquer PWMK1086, PWMK3042

Countertop: PWTE0069, BWMK2011





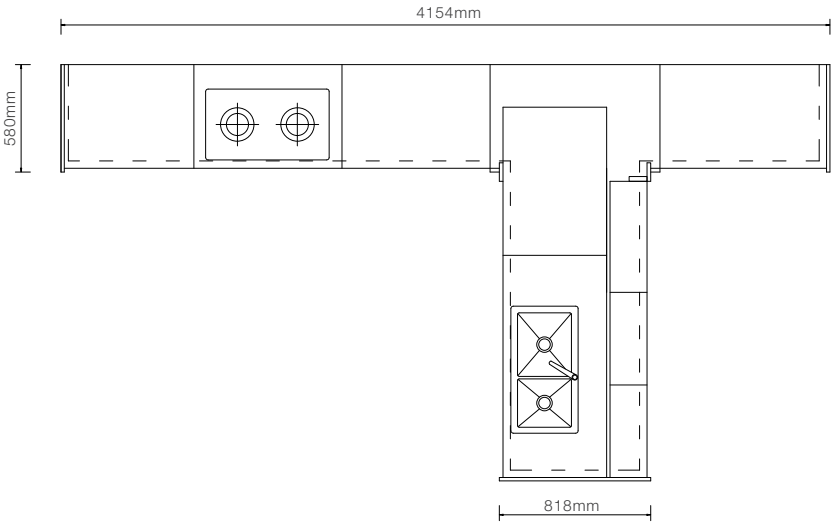
YONFA

BLCC23072

Door Style: YMG220, YMA001P

Door Finish: PVC PWMG0355, Melamine PWMA0360

Countertop: PWTE0069



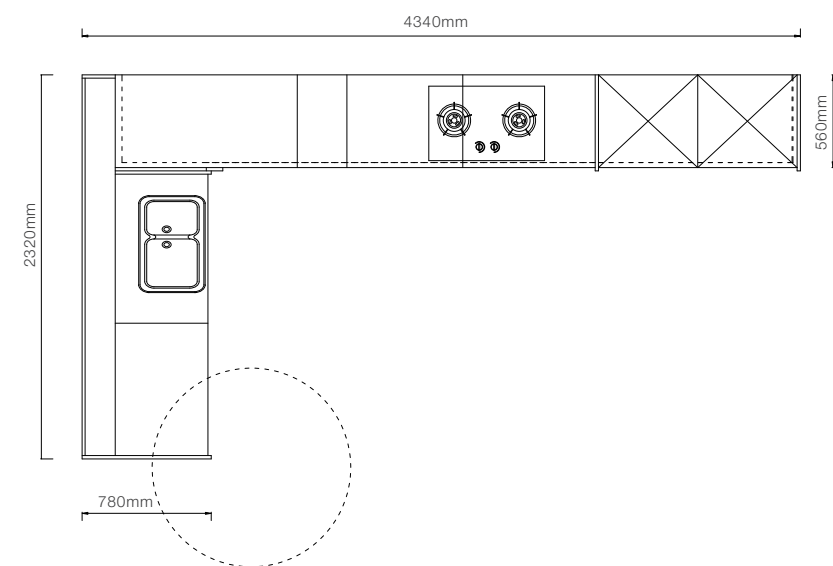
CLOUD

BLCC23074

Door Style: YMC003

Door Finish: UV Lacquer PWMC0145

Countertop: PWTE0007





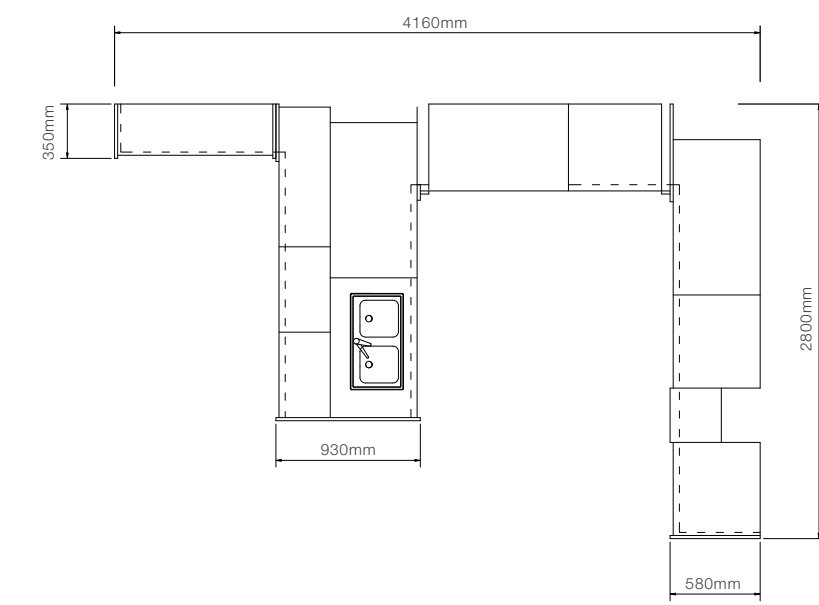
LYLE

BLCC23075

Door Style: YMA116, YMA001

Door Finish: Melamine PWMA0504, PWMA0503

Countertop: PWTY1093



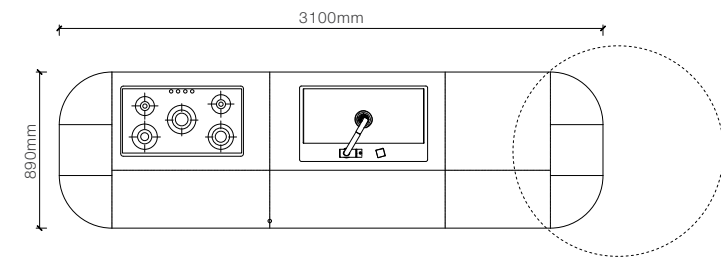
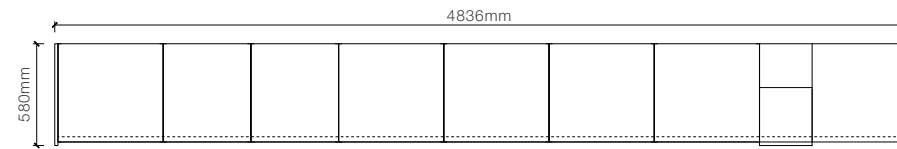
CILAN

BLCC22300

Door Style: YMK001, YMK002, YMK005A(R300)

Door Finish: Lacquer PWMK2014, PWMK2146

Countertop: PWTE0069





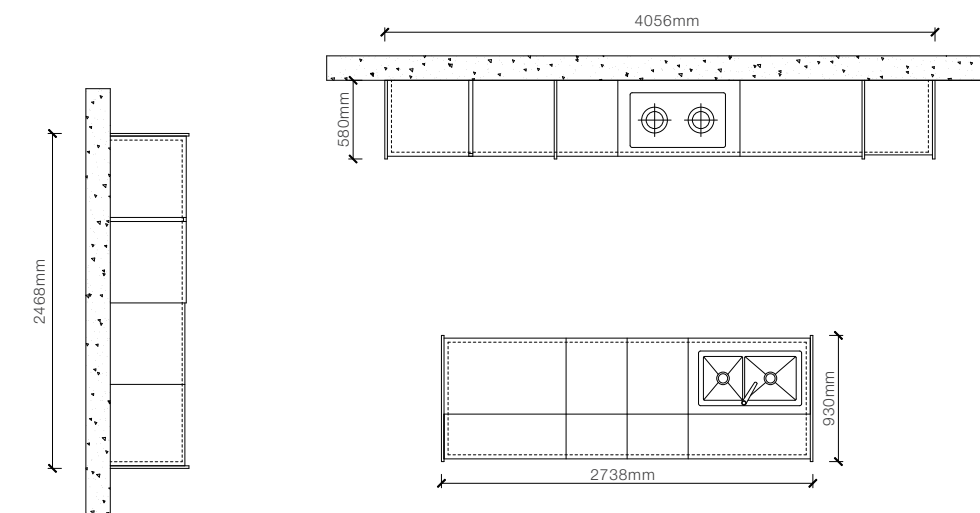
STUE

BLCC22304

Door Style: YMG182, YMA001

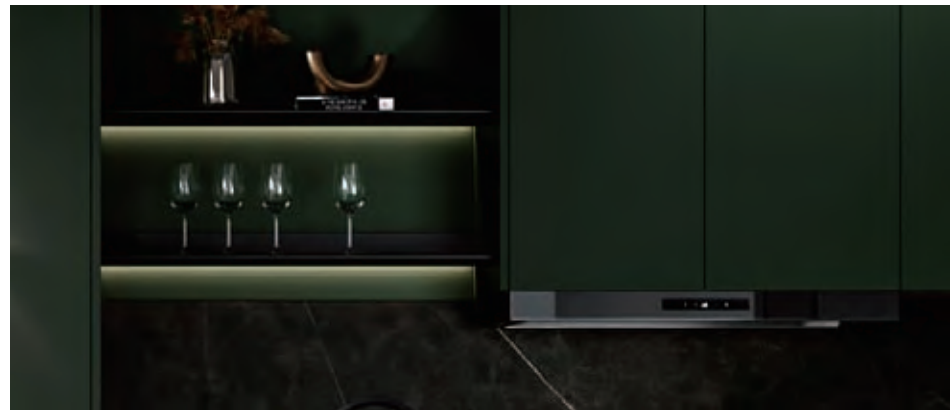
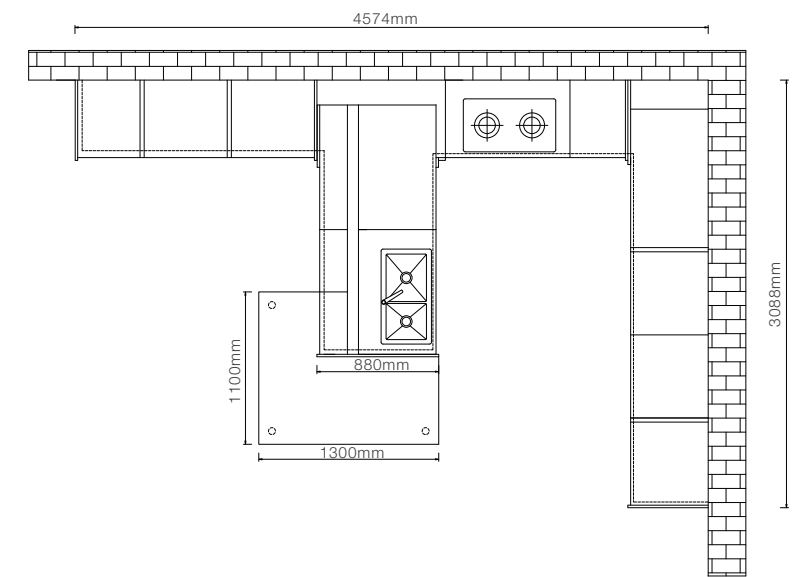
Door Finish: PVC PWMG0287, PWMG0284, Melamine BWMA0089

Countertop: BWTE0006



STAR BURST

BLCC22305
Door Style: YMC003
Door Finish: UV Lacquer PWMC0114, PWMC0113
Countertop: BWTE0006





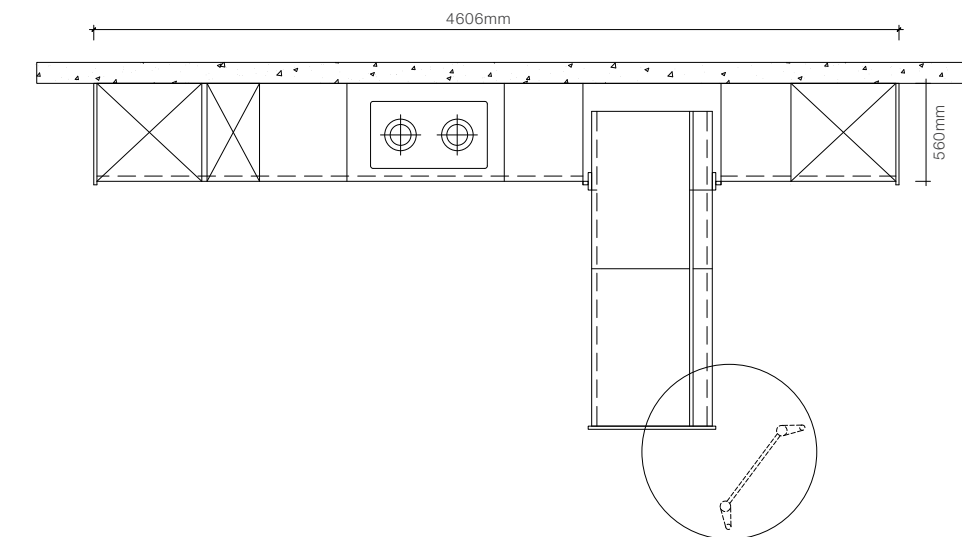
HELLA

BLCC22306

Door Style: YMA001, YMG153(D22)

Door Finish: Melamine PWMA0381, PVC BWMG0034

Countertop: BWTE0005



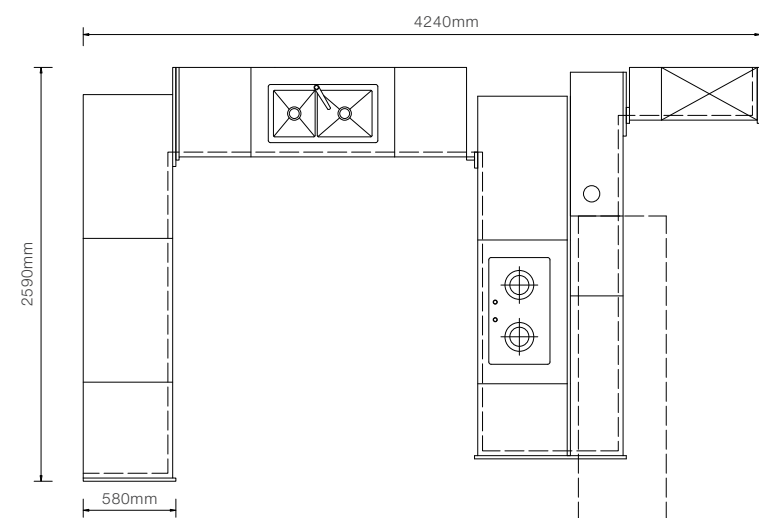
GALAXY BREEZE

BLCC22307

Door Style: YMC032P

Door Finish: UV Lacquer BWMC0015, PWMC0116

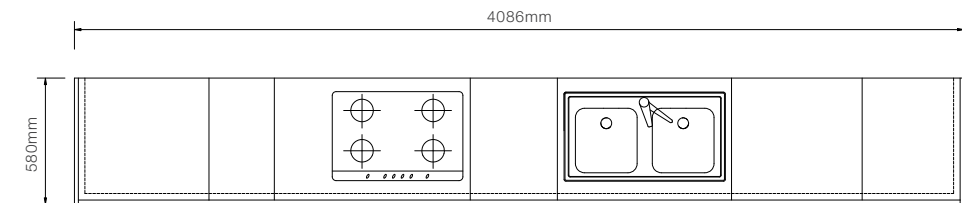
Countertop: PWTE0049





CLOUD SHADOW

BLCC22308
Door Style: YMA001, YMG153(D22)
Door Finish: Melamine PWMA0381, PVC BWMG0034
Countertop: BWTE0005



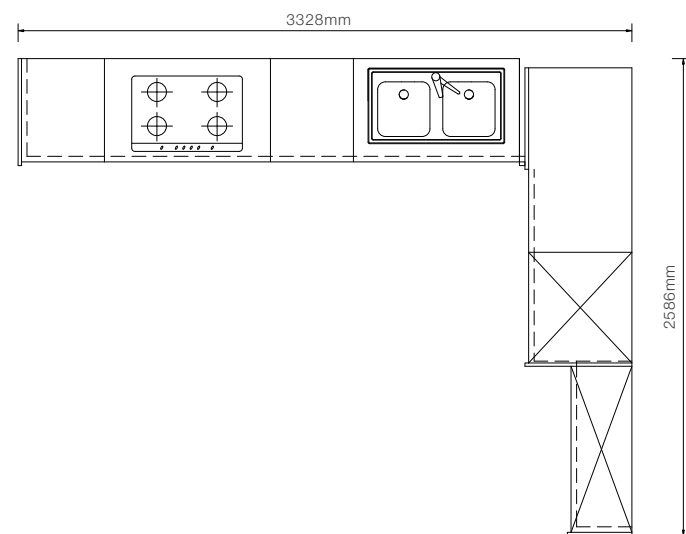
DREAM GAZE

BLCC22309

Door Style: YMA001

Door Finish: Melamine PWMA0387, PWMA0386

Countertop: BWTY1020



POPULAR DESIGN WORKS



Inject the core into the design and make the details more shiny. Simple geometric lines and structures can convey high-level metaphors without complex designs.



OBL-23001



Matt Lacquer
PWMK2203



Melamine
PWMA0503



Countertop
PWTY1031





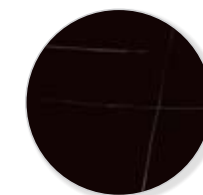
OBL-23005



UV Lacquer
PVMC0024



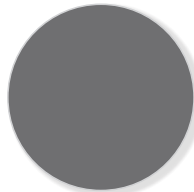
Melamine
BWMA0084



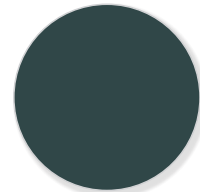
Countertop
BWTE0006



OBL-23006



Matt Lacquer
PWMK2018



High Gloss Lacquer
PWMK1068



Melamine
BWMA0089



Countertop
PWTE0069





OBL-23007



Melamine
PWMA0157



Matt Lacquer
PWMK2203



Countertop
PWTE0008



OBL-23008



Melamine
PWMA0128



High Gloss Lacquer
PWMK1086



Melamine
PWMA0215

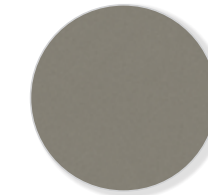


Countertop
PWTE0069





OBL-23009



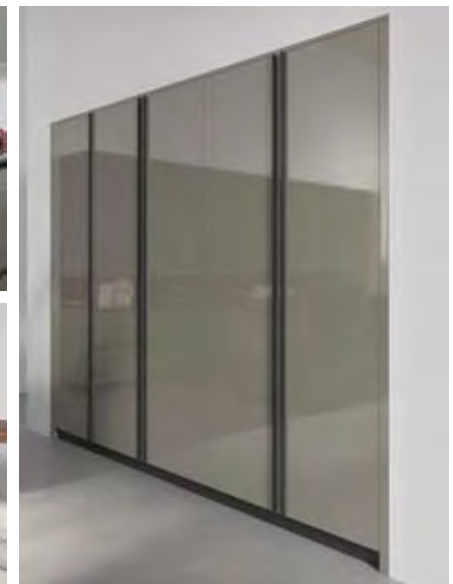
High Gloss Lacquer
PWMK2134



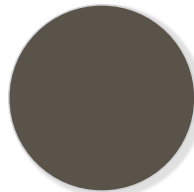
Melamine
PWMA0215



Countertop
PWTE0007



OBL-23010



PVC
BWVG0047



Wood Veneer
PWMM3060



Countertop
PWTE0069

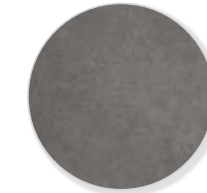




OBL-23011



Melamine
BWMA0084



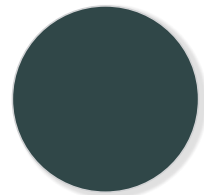
UV Lacquer
PWMC0114



Countertop
PWTY1046



OBL-23002



High Gloss Lacquer
PWMK1068



Melamine
BWMA0084



Countertop
PWTY1064





OBL-23003



High Gloss Lacquer
PWMK1086



Melamine
PWGA0030



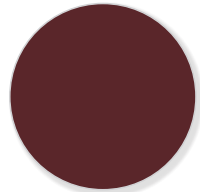
Countertop
PWTY1093



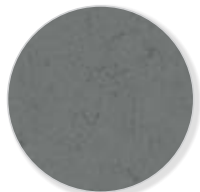
OBL-23004



High Gloss Lacquer
PWMK1053



Matt Lacquer
PWMK2146



Countertop
PWTY1050



OBL-22001



High Gloss Lacquer
PWMK1018



Melamine
PWMA0386



Countertop
PWTY1088





OBL-22002



Melamine
PWMA0215



Melamine
PWMA0196



Countertop
PWTE0069



OBL-22003



Melamine
PWMA0157



Matt Lacquer
BWMK2010



Countertop
PWTE0034



CUSTOMER DESIGN REFERENCE



Combined with solid research on product systems and a deep understanding of user habits, OPPOLIA always provides you with more complete whole-house solutions.

01



02



03



04



05



06



07



08



09



10



11



12

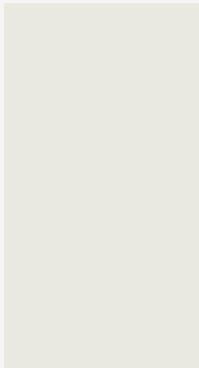




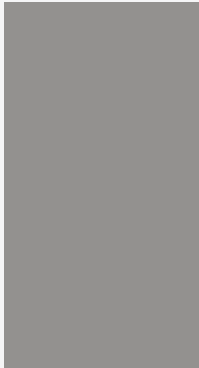
OPTIONAL COLORS

The door materials, door styles, and colors, thoughtfully selected by OPPOLIA's design team, enable us to create infinite design possibilities and meet various preferences, budgets and segments.

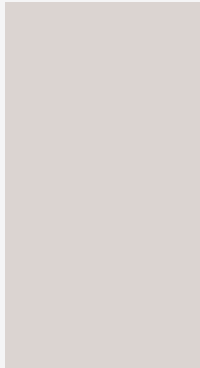
Lacquer



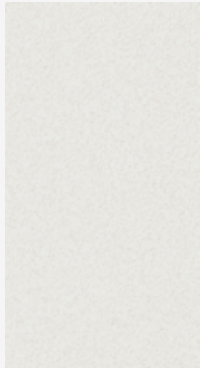
PWMK1018
High Gloss Lacquer



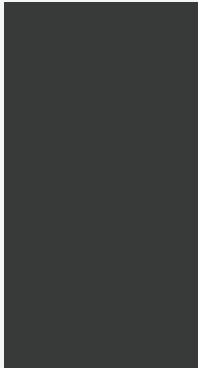
PWMK1053
High Gloss Lacquer



PWMK2014
Matt Lacquer



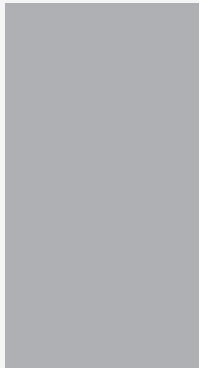
PWMK3007
Flash Lacquer



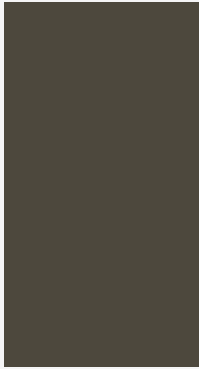
PWMK2006
Matt Lacquer



BWMK2011
Matt Lacquer



BWMK2018
Matt Lacquer



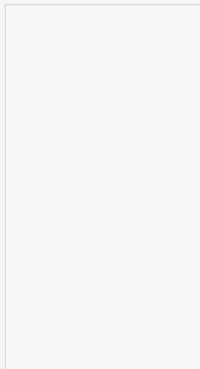
BWMK2086
Matt Lacquer



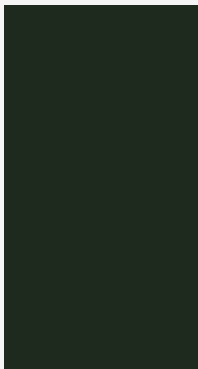
PWMK2146
Matt Lacquer



PWMK1086
High Gloss Lacquer



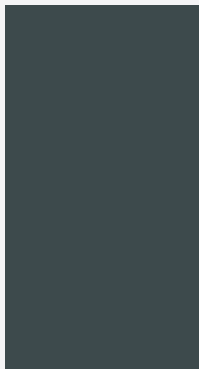
PWMK2203
Matt Lacquer



PWMK3042
Flash Lacquer



PWMK1072
Matt Lacquer



PWMK1068
High Gloss Lacquer

Melamine



BWMA0025



BWMA0047



BWMA0056



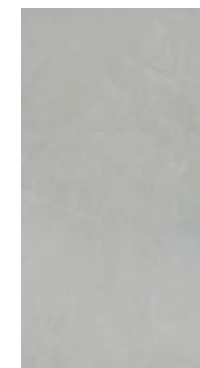
BWMA0071



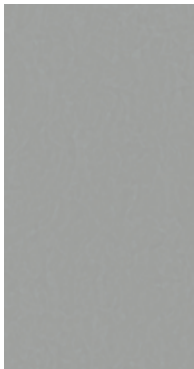
BWMA0074



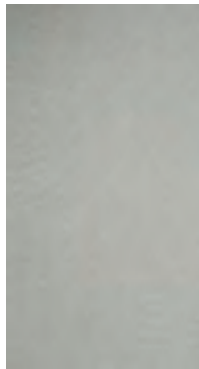
BWMA0083



BWMA0085



BWMA0086



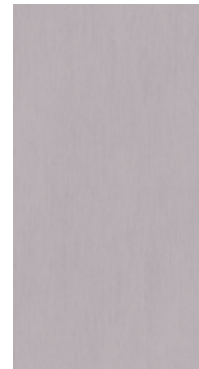
BWMA0087



BWMA0089



PWMA0128



PWMA0163

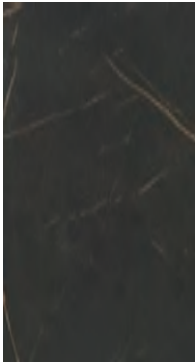


PWMA0196

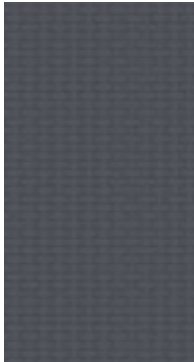


PWMA0215

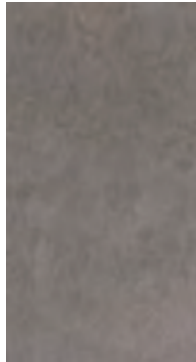
Melamine



PWMA0234



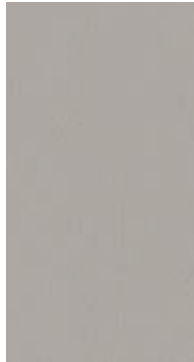
PWMA0360



PWMA0381



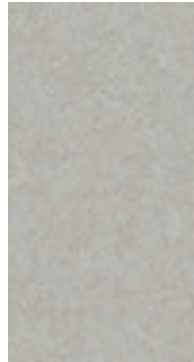
PWMA0386



PWMA0387



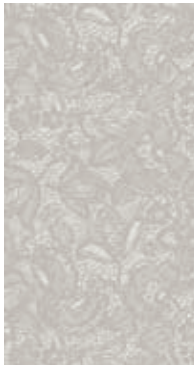
PWMA0503



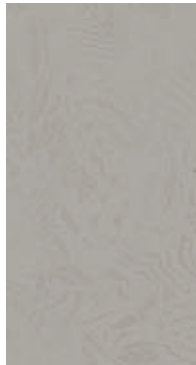
PWMA0504



PWMA0505



PWMA0512



PWMA0513



PWMA0123

UV Lacquer

UV Lacquer Grade A

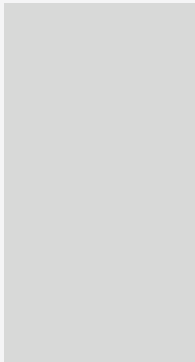


PWMC0145

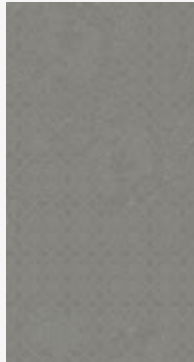
UV Lacquer Grade B ▶



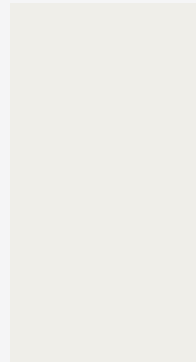
BWMC0021



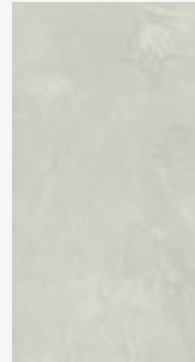
PWMC0054



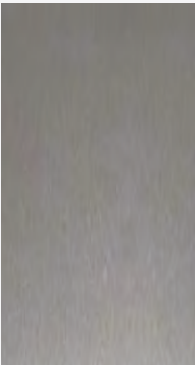
PWMC0148



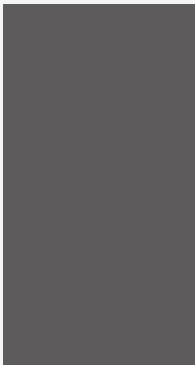
BWMC0001



BWMC0009



BWMC0013



BWMC0015



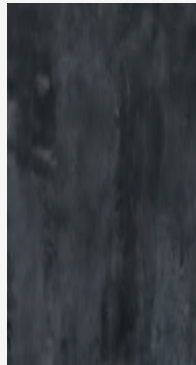
BWMC0016



BWMC0014



PWMC0019



PWMC0024



PWMC0113

UV Lacquer

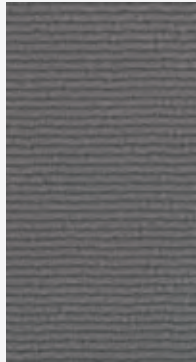
UV Lacquer Grade B ▶



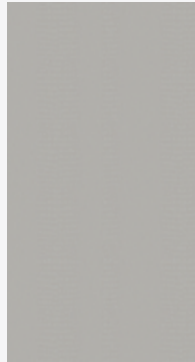
PPMC0114



PPMC0115



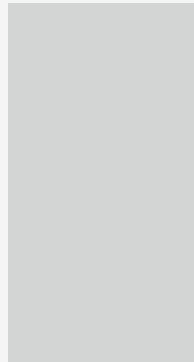
PPMC0116



PPMC0125

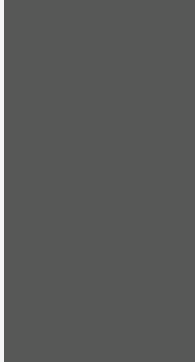


PPMC0129

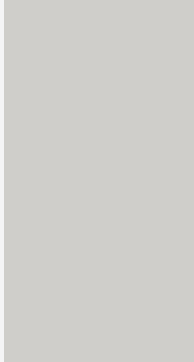


PPMC0130

Spray Lacquer ▶



PWMH0001



PWMH0004



PWMH0005

PVC Foil

PVC Foil Grade A ▶



PWMG0109



BWMG0034



BWMG0046



BWMG0047



PWMG0284



PWMG0287



PWMG0355

PVC Foil Grade B ▶



BWMG0035



BWMG0044



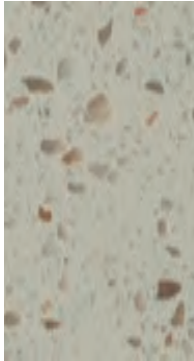
PWMG0143

Countertop

Quartzstone P1 Series ▶



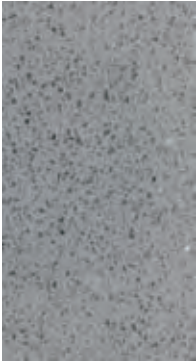
BWTY1001



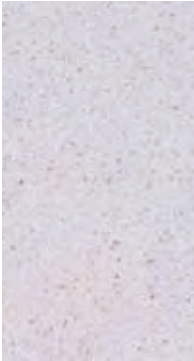
BWTY1002



BWTY1003



BWTY1020

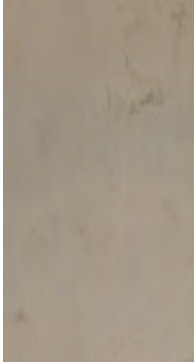


BWTY1077

Quartzstone P3 Series ▶



PWTY1026



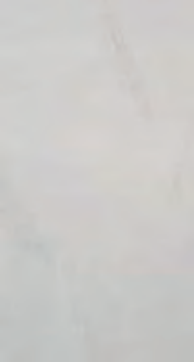
PWTY1047



PWTY1048



PWTY1093



PWTY1112



PWTY1113

Quartzstone P4 Series



PWTY1031

Quartzstone P5 Series



PWTY1046

Sintered Surface ▶



BWTE0005



BWTE0006



PWTE0049



PWTE0069



PWTE0048

Countertop



Kitchens





Paint Series

Provide a variety of surface treatment options: high gloss, matte, metallic gloss, skin feel matte. In particular, the skin-feeling matte paint conforms to the latest fashion trends and is simple and elegant. Adornus ensures light resistance to the paint, thanks to multi-layer paint technology.













Glass Series

The tempered glass can have a variety of effects, whether it's bright or matte, or even wood texture and stone texture, interact perfectly with the rest of the kitchen. The characteristics of glass are easy to clean, scratch-resistant, making it easier to take care, practical and beautiful co-existence.













Decorative panel series

Sanitary, waterproof and corrosion-resistant materials, it makes the panel in color, texture, brightness and other aspects of infinite possibilities, always bring simple and vivid effects to the kitchen.





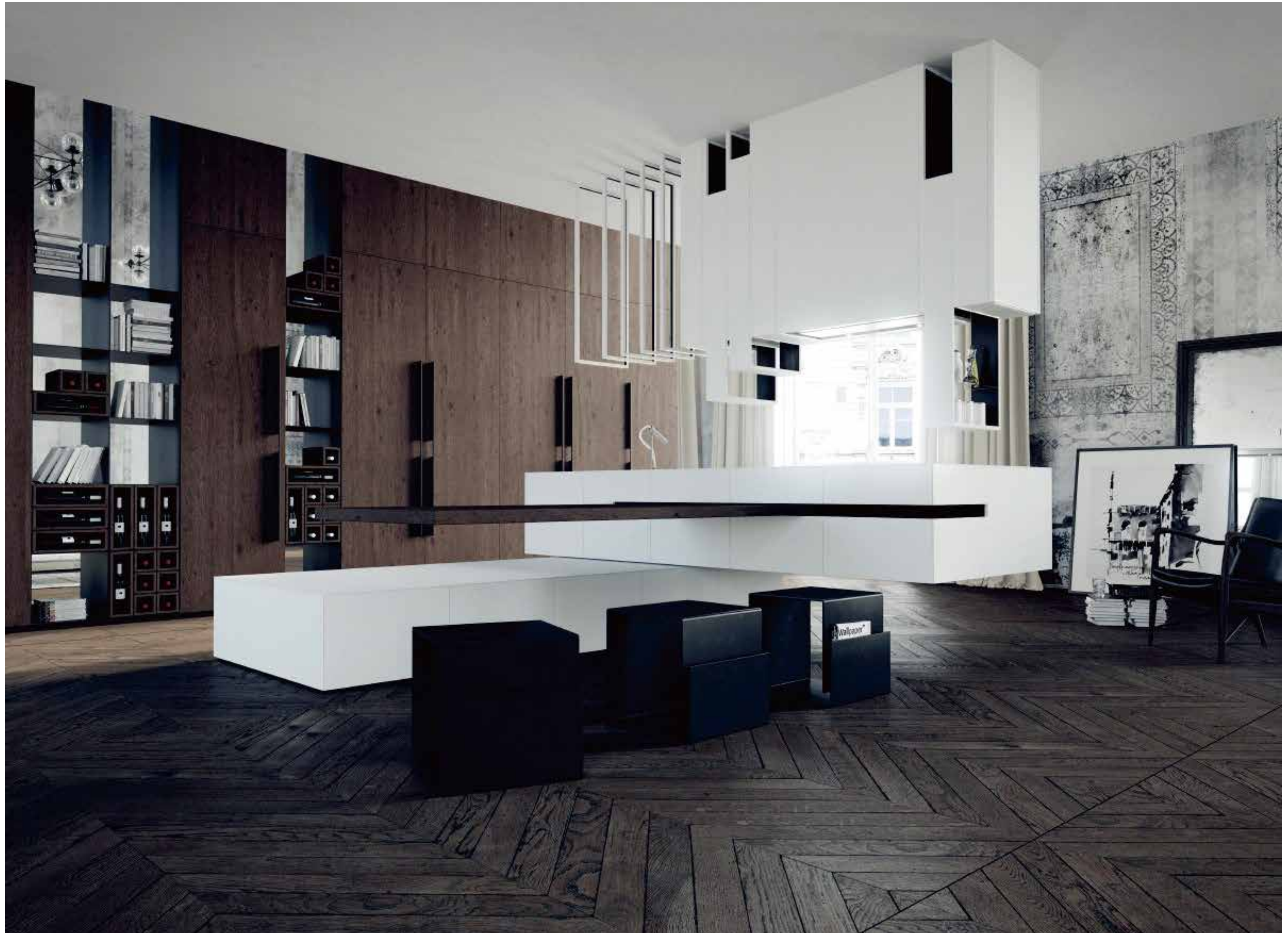






Veneer series

Superb wood-skin craftsmanship adds more vitality to the door panels, and different paving effects take on different styles, derived from natural and creative.







Solid wood series

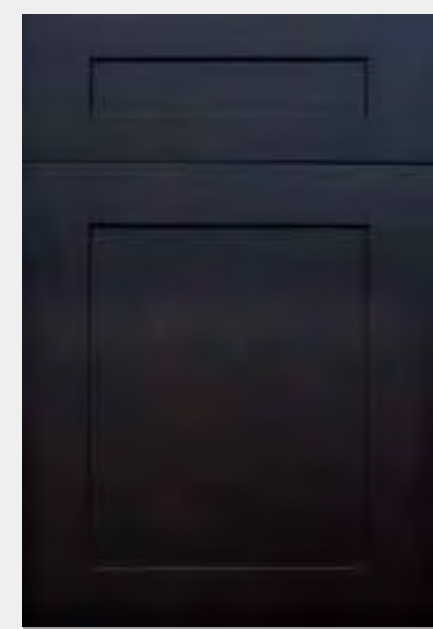
Natural materials with timeless charm. From vision, touch and even the smell to arouse people's instinctive feelings about nature. The rich door-type variation allows the kitchen to switch freely between elegance and simplicity. The high-quality processing technology makes the solid wood kitchen easy to take care of .













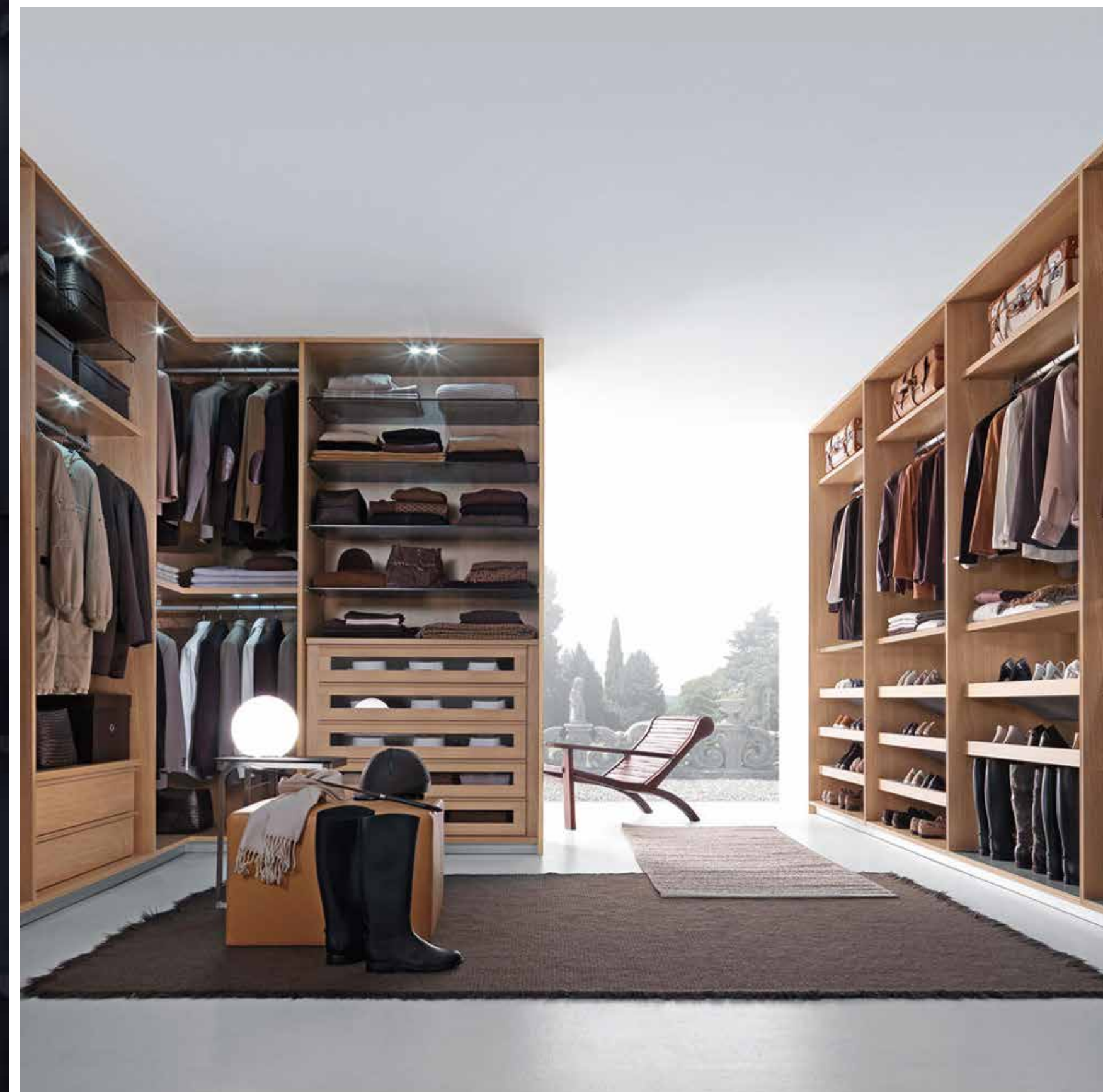
Wardrobes



Open wardrobe

Open wardrobe is kind of closet without doors. It is also called open cloakroom. Open wardrobes are the furniture products of the modern generation, especially the 80s and 90s, who want to be able to solve all the functionality in a large space. Open type wardrobes are more avant-garde than traditional one due to their powerful storage capabilities and open-ended and convenience.









Sliding door wardrobe

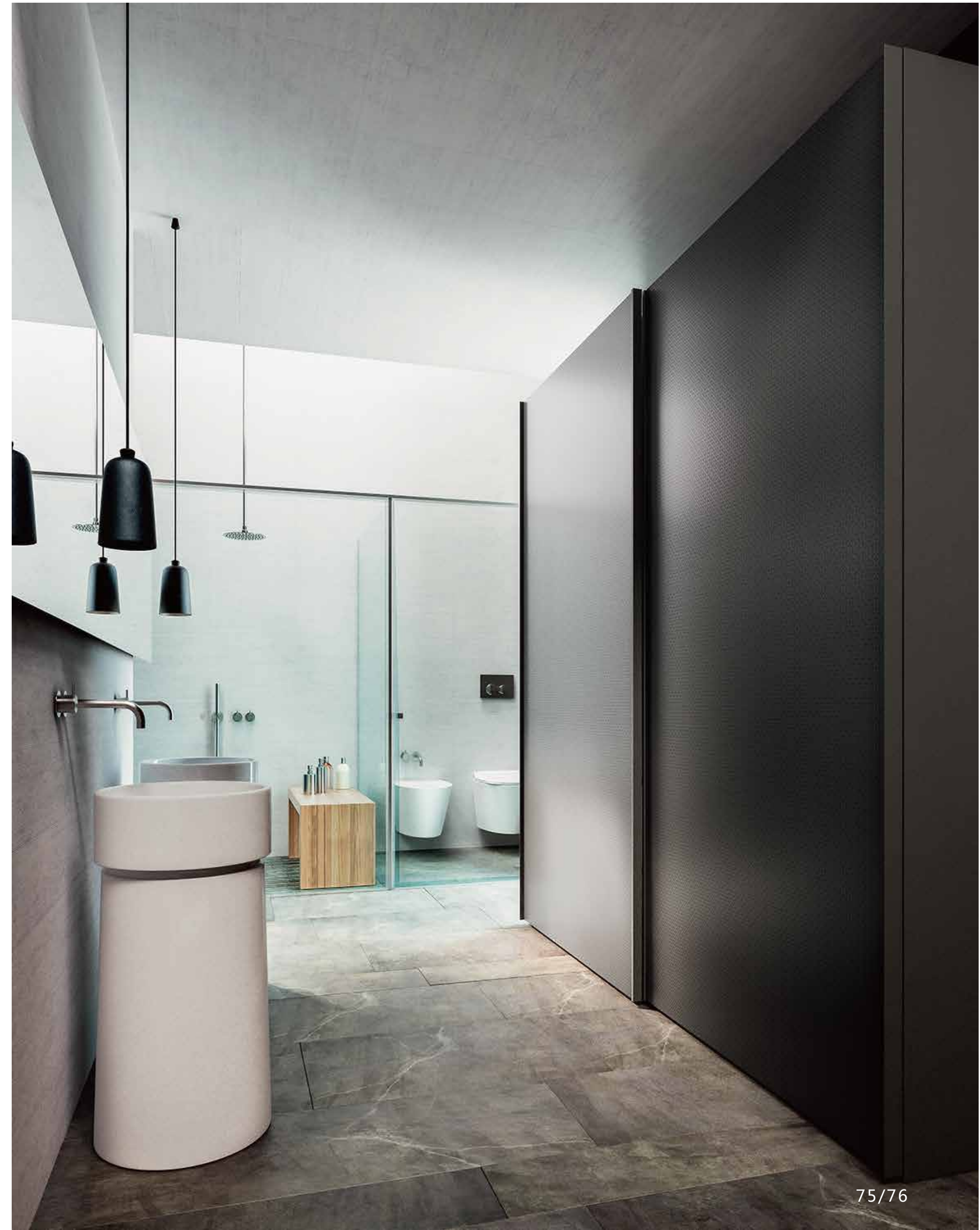
Sliding doors are made of wood, glass, mirrors and other materials. The wood texture and design give people a natural and simple, gentle and approachable softness, which is suitable for the needs of people who want to pursue the natural and return to the original. Because of its use of sliding doors, tailor-made, and simple custom process, so in the use of convenient, structural stability, improve space utilization, cost-effective, etc. Sliding door wardrobe has an absolute advantage.













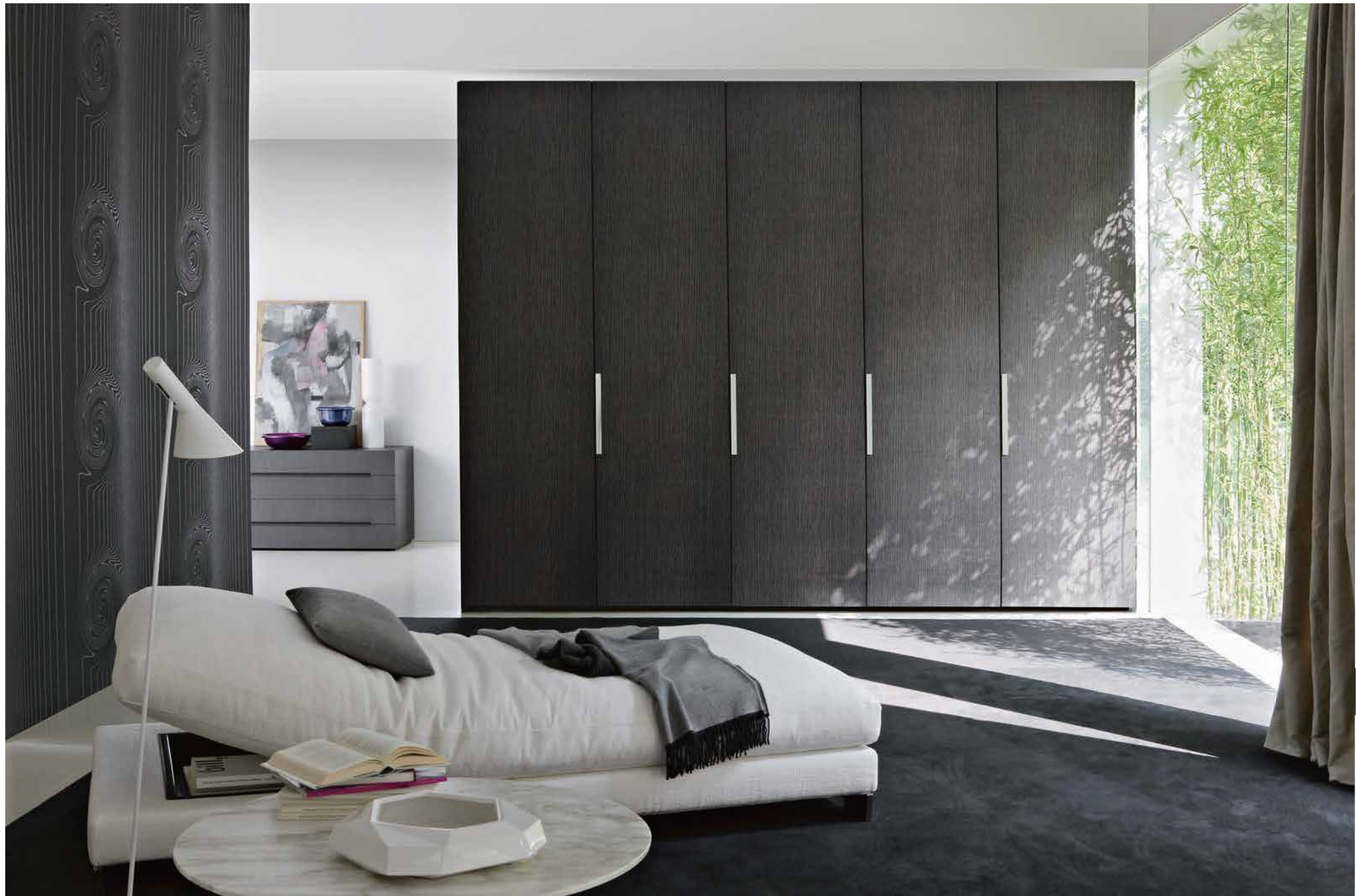
Flat door wardrobe

Compared with sliding door, the open-door closet has the advantages of low price, good sealing and long service life. With these strengths, open-door closet is still active in people's vision. Today's open-door closet in shape and style have a significant breakthrough.

The one-piece open-door wardrobe tightly wraps the bedroom, which can also play a role of partition in the very large space. Built-in flat-door wardrobe, freeing up more private space for the bedroom, as if integrated with the wall, practical and convenient.









Bathrooms





Bathroom vanity series

Among the several big pieces of bathroom space, the most important is the one which integrates the function of washing, storage and dressing. As one of the most functional bath parts, its style is also rich and diverse. We need to choose a product with good designs and quality to match with overall style of our home in front of a wide range of bathroom cabinets and brands.



Engineering cases



PHILADELPHIA

1700 Germantown, USA
Solid wood series

200 sets



PHILADELPHIA

United States 938 New Market
Paint series

36 sets



JOHANNESBURG

Steyn City, South Africa
Glass series

65 sets



ADELAIDE

One adelaide, Australia
Decorative panel series

132 sets



MOSCOW

Red Square Apartment, Russia
Solid wood series

108 sets



EDMONTON

Century Park, Canada
Decorative panel series

180 sets



MUSCAT

Oman Orange Apartment
Glass series

32 sets



ADDIS ABABA

Bernard Hotel, Ethiopia
Paint series

48 sets



ADDIS ABABA

Tigist Apartment, Ethiopia
UV series

30 sets

04 Certification



CSI-18137 CARB 2019 cert

CHAIBU VILLAGE, TANYI TOWN
FEIXIAN COUNTY, LINYI CITY
SHANDONG PROVINCE
CHINA

has demonstrated through inspection audit and testing, the capability in meeting the process requirements under the California Air Resources Board (CARB) as provided under sections 93120-93120.12, title 17, California Code of Regulations and the defined maximum emission requirements under Table 1, Section 93120.2 of the formaldehyde emission standards, to provide for acceptable formaldehyde emissions from the composite wood products sold, supplied, offered for sale, or manufactured for sale in California. This certificate expires one year from date of issue.

Scope of Certification
ARB 93120(a) Phase 2 : HWPW-VC 5mm - 25mm
Certificate Number: **CSI-18137C**
Issue Date: **2nd April 2019**



GZIN1606027134PC

The following sample(s) was/ were submitted and identified on behalf of the client as:

Sample Name	: AC WHITE PRIMER/AC WHITE ENAMEL
Product Category	: SAMPLE 1: POLYURETHANE COATINGS(PRIMER PAINT); SAMPLE 2: POLYURETHANE COATINGS(FINISH PAINT), LUSTER(60°)<80
SGS Ref. No.	: CANML1611579401
Date of Receipt	: Jun 17, 2016
Testing Start Date	: Jun 17, 2016
Testing End Date	: Jun 28, 2016
Test result(s)	: For further details, please refer to the following page(s)
Conclusion	: Based on the performed tests on submitted sample(s), the results comply with the requirement of VOC content, benzene content, total content of toluene, ethylbenzene and xylene, total content of free diisocyanate (2,4-TDI, 2,6-TDI and HDI), halohydrocarbon content and soluble heavy metals content in GB 18581-2009.



CSI-18137 EPA 2019 cert

CHAIBU VILLAGE, TANYI TOWN
FEIXIAN COUNTY, LINYI CITY
SHANDONG PROVINCE
CHINA

has demonstrated through inspection audit and testing, the capability in meeting the process requirements under the EPA TSCA Title VI section 770.21 and the emission limits set in section 770.10, to provide for acceptable formaldehyde emissions from the composite wood products sold, supplied, offered for sale, or manufactured for sale in the United States. This certificate expires one year from date of issue.

Scope of Certification
EPA TSCA Title VI : HWPW-VC 5mm - 25mm
Certificate Number: **CSI-18137E**
Issue Date: **2nd April 2019**



GZIN1606027136PC

The following sample(s) was/ were submitted and identified on behalf of the client as:

Sample Name	: AC CLEAR SEALER/AC CLEAR TOPCOAT
Product Category	: SAMPLE 1: POLYURETHANE COATINGS(PRIMER PAINT); SAMPLE 2: POLYURETHANE COATINGS(FINISH PAINT), LUSTER(60°)<80
Date of Receipt	: Jun 17, 2016
Testing Start Date	: Jun 17, 2016
Testing End Date	: Jun 28, 2016
Test result(s)	: For further details, please refer to the following page(s)
Conclusion	: Based on the performed tests on submitted sample(s), the results comply with the requirement of VOC content, benzene content, total content of toluene, ethylbenzene and xylene, total content of free diisocyanate (2,4-TDI, 2,6-TDI and HDI), halohydrocarbon content and soluble heavy metals content in GB 18581-2009.