

# ABOUT US

We are the leading supplier of building material since 2015. With our extensive range of customizable materials, you can create your perfect space quickly and affordably. Whether you're tackling a large project or a small update, we've got you covered with no minimum order requirements.

We boast an annual output of 400,000 m<sup>2</sup>, Certified by NFRC, CE, AS2047, CSA, and ISO9001, we served 100+ countries. Our 100+ patents reflect our product innovation and R&D capability.

We will provide more customers with better products and services in the future.



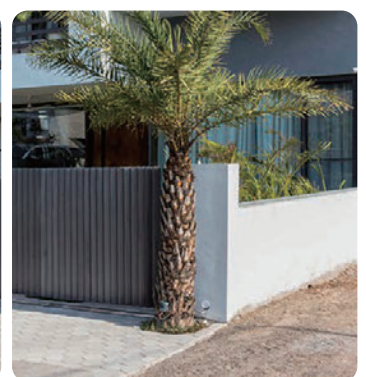
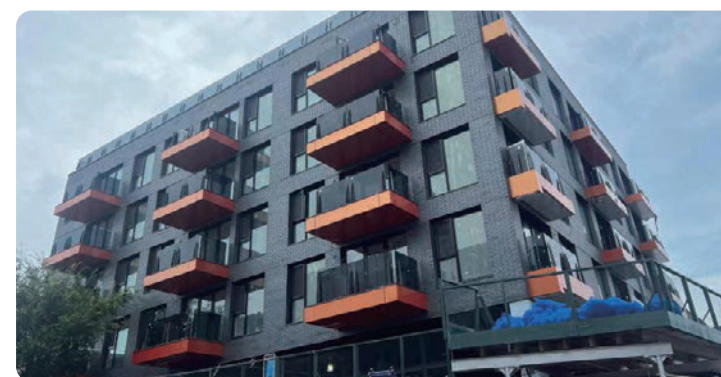
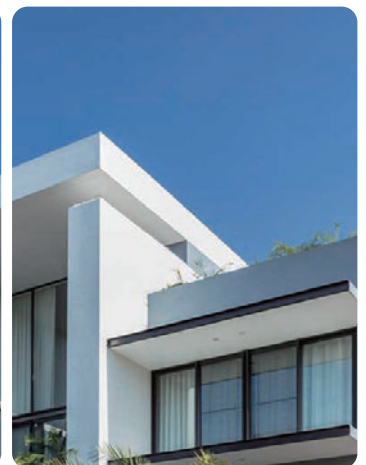


# OUR PROJECTS

We have successful cases in 100 countries around the world

## WHY CHOOSE US ?

- 15+years of experience in aluminum windows and doors
- 70,000+ m<sup>2</sup> factory area, 4000 m<sup>2</sup> showroom with 600+ employees
- 400,000+ m<sup>2</sup> annual output and 200,000+ successful cases
- Authorized by NFRC, CE, AS2047, CSA, and ISO9001
- 100+ national patents including invention patent, appearance patent, design patent
- 50+ honors praised by the industry
- 20+ experts R&D team
- 700+ distributors, trade with customers more than 100 countries
- Cooperate with outstanding raw material and hardware brands all over the world
- 100% full inspection before shipment
- One-stop customer service from ordering to shipment



# CONTENTS

## ALUMINUM THERMAL BREAK CASEMENT WINDOW SERIES

<b>63</b> Casement Window	016
<b>S6</b> Casement Window	017
<b>S9</b> Casement Window	018
<b>E0</b> Casement Window	019
<b>R8Y</b> Casement Window	020
<b>K8Y</b> Casement Window	021
<b>K9Y</b> Casement Window	022
<b>Y148</b> Casement Window	023
<b>E5N</b> Inward opening Window	024
<b>E4N</b> Inward opening Window	025
<b>E3N</b> Inward opening Window	026
<b>E6N</b> Inward opening Window	027
<b>K5N</b> Inward opening Window	028

## ALUMINUM SLIDING WINDOWS/SLIDING DOOR SERIES

<b>E2T</b> Sliding Window	030
<b>E5T</b> Sliding sealing Window	031
<b>G41</b> Sliding Sealing Window	032
<b>G46</b> Slide and Tilt window	033
<b>Q3</b> Middle narrow Sliding door	034
<b>Q5</b> Sliding door	035
<b>135F</b> Sliding door	036
<b>135D</b> Sliding door	037
<b>143</b> Sliding door	038
<b>Q15</b> Thermal break Sliding door	039
<b>Q9</b> Thermal break Sliding door	040
<b>103</b> Extremely narrow Hanging door	041

## ALUMINUM SWING DOOR SERIES

<b>P50</b> Swing door	043
<b>P103</b> Interior Swing door	044

## ALUMINUM FOLDING DOOR SERIES

<b>78</b> Thermal break Folding door	045
<b>80</b> Thermal break Folding door	046
<b>93</b> Thermal break Folding door	047
<b>Z3</b> Pivot door	048

## ALUMINUM SUNROOM / SKYLIGHT SERIES

<b>150</b> Curtain wall series	050
<b>120</b> Series Sunrom	051
<b>138</b> Series Sunrom	052
<b>150</b> Series Sunrom	053
<b>Skylight</b>	054

## OTHER SERIES

<b>Shower room Series</b>	055-056
<b>Entrance Door Series</b>	057-058
<b>Automatic garage door</b>	059-060
<b>Aluminum Shutter</b>	061-062



# BROKEN BRIDGE CASEMENT WINDOW SERIES

- Three-way sealing design isobaric principle drainage
- National utility patent-six-point lock on all sides
- National Practical Patent-Built-in Diamond Wire Pressing Line



63

## Casement Window



### PRODUCT PARAMETES

Water tightness	650 <sub>pa</sub>
Air tightness	1.8 <sub>m³/(m·h)</sub>
Wind pressure resistance	4.5K <sub>pa</sub>
Sound insulation performance	35 <sub>dB</sub>
U-Factor(U.S./1-P)	0.32
SHGC	0.25

**Glass:** Double Tempered Glass with argon ags  
5mm+20A+5mm  
(PVDF Aluminum Strip Between double glass)

**Profile:** 6063-T5 aluminum profile

**Profile Thinckness:** 1.5MM

**Handle:** WEHAG Handle in Black and Sliver

**Hinge:** WEHAG Hinge

**Lock point:** Black Six Point Lock(Invention patent)

**Insulation strip:** Standard BAIYUNYILE insulation strip

**Opening Way:** Outward Opening / Awning

**Optional package:** New 48 Pack/New 88 Pack

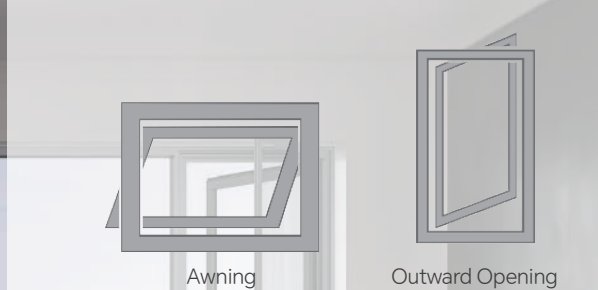
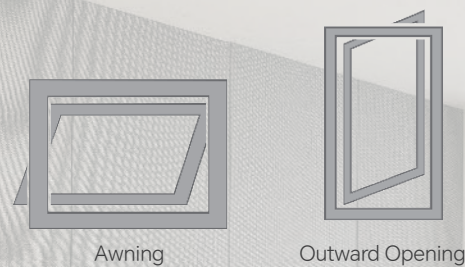
**Sealing material:** EPDM rubber strip

**Available Size:** Opening Panel ( Width:350-700/Height:400-1600)

### PRODUCT PROCESS

- Process of applying cross-sectional adhesive at a 45 ° angle to the outer frame and glass fan
- Process of filling anti-seepage adhesive at the connection of the central column





## S6

### Casement Window



#### PRODUCT PARAMETERS

Water tightness	700 <sub>pa</sub>
Air tightness	1.2 m <sup>3</sup> /(m·h)
Wind pressure resistance	5K <sub>pa</sub>
Sound insulation performance	35 <sub>dB</sub>
U-Factor(U.S./1-P)	0.23
SHGC	0.20

**Glass:** Double Tempered Glass with argon ags  
5mm+27A+5mm  
(PVDF Aluminum Strip Between double glass)

**Profile:** 6063-T5 aluminum profile

**Profile Thinckness:** 1.8MM

**Frame width:** 82MM

**Handle:** WEHAG Handle in Black and Sliver

**Hinge:** WEHAG Hinge

**Lock point:** Black Six Point Lock(Invention patent)

**Insulation strip:** Standard BAIYUNYILE insulation strip

**Opening Way:** Outward Opening / Awning

**Optional package:** New 48 Pack/New 88 Pack

**Sealing material:** EPDM rubber strip

**Available Size:** Opening Panel ( Width:350-700/Height:400-1600)

#### PRODUCT PROCESS

- Process of applying cross-sectional adhesive at a 45 ° angle to the outer frame and glass fan
- Whole frame two-component injection molding process
- Glass glue filling process at the connection of the center pillar

## S9

### Casement Window



#### PRODUCT PARAMETERS

Water tightness	700 <sub>pa</sub>
Air tightness	1.2 m <sup>3</sup> /(m·h)
Wind pressure resistance	5K <sub>pa</sub>
Sound insulation performance	35 <sub>dB</sub>
U-Factor(U.S./1-P)	0.23
SHGC	0.20

**Glass:** Double Tempered Glass with argon ags  
5mm+27A+5mm  
(PVDF Aluminum Strip Between double glass)

**Profile:** 6063-T5 aluminum profile

**Profile Thinckness:** 1.8MM

**Frame width:** 109MM

**Handle:** Customized non base safety Handle in Black and Sliver

**Hinge:** Customized flat open friction Hinge

**Lock point:** Customized Black Zinc Alloy Six Point Lock

**Insulation strip:** Standard DERCHI insulation strip

**Opening Way:** Outward Opening / Awning

**Optional package:** New 48 Pack/New 88 Pack

**Sealing material:** EPDM rubber strip

**Available Size:** Opening Panel ( Width:350-700/Height:400-1600)

#### PRODUCT PROCESS

- Open the fan and fix the position using internal and external rubber strip technology
- Built in diamond mesh wire pressing process





## Y148

### Casement Window



#### PRODUCT PARAMETES

Water tightness	720 <sub>pa</sub>
Air tightness	1.2 m <sup>3</sup> /(m·h)
Wind pressure resistance	5K <sub>pa</sub>
Sound insulation performance	35 <sub>dB</sub>
U-Factor(U.S./1-P)	0.23
SHGC	0.20

**Glass:** Double Tempered Glass with argon ags  
5mm+27A+5mm  
(PVDF Aluminum Strip Between double glass)

**Profile:** 6063-T5 aluminum profile

**Profile Thinckness:** 3.0MM

**Frame width:** 148MM

**Handle:** WEHAG Handle in Black and Sliver

**Hinge:** WEHAG 14 inches Hinge

**Lock point:** Black Six Point Lock(Invention patent)

**Insulation strip:** Standard DERCHI insulation strip

**Opening Way:** Outward Opening / Awning

**Optional package:** New 48 Pack/New 88 Pack

**Sealing material:** EPDM rubber strip

**Available Size:** Opening Panel ( Width:400-750/Height:400-1600)

#### PRODUCT PROCESS

- Open the fan and fix the position using internal and external rubber strip technology
- Built in diamond mesh wire pressing process
- Whole frame two-component injection molding process

## E5N

### Inwards opening window



#### PRODUCT PARAMETES

Water tightness	700 <sub>pa</sub>
Air tightness	1.2 m <sup>3</sup> /(m·h)
Wind pressure resistance	5K <sub>pa</sub>
Sound insulation performance	35 <sub>dB</sub>
U-Factor(U.S./1-P)	0.23
SHGC	0.20

**Glass:** Double Tempered Glass with argon ags  
5mm+27A+5mm  
(PVDF Aluminum Strip Between double glass)

**Profile:** 6063-T5 aluminum profile

**Profile Thinckness:** 2.0MM

**Frame width:** 85MM

**Handle:** Customized non base safety Handle in Black and Sliver

**Hinge:** Customized flat open friction Hinge

**Hardware:** Customized version 180° Tilt and Turn Accessories

**Insulation strip:** Standard DERCHI insulation strip

**Opening Way:** Tilt and Turn/Inward opening

**Optional package:** New 48 Pack/New 88 Pack

**Sealing material:** EPDM rubber strip

**Available Size:** Opening Panel ( Width:480-850/Height:600-1800)

#### PRODUCT PROCESS

- Open the fan and fix the position using internal and external rubber strip technology
- Built in diamond mesh wire pressing process
- Whole frame two-component injection molding process





## E4N

### Inwards opening window

#### PRODUCT PARAMETERS

Water tightness	700 <sub>pa</sub>
Air tightness	1.2 m <sup>3</sup> /(m·h)
Wind pressure resistance	5K <sub>pa</sub>
Sound insulation performance	35 <sub>dB</sub>
U-Factor(U.S./1-P)	0.23
SHGC	0.20

**Glass:** Double Tempered Glass with argon ags  
5mm+27A+5mm  
(PVDF Aluminum Strip Between double glass)

**Profile:** 6063-T5 aluminum profile

**Profile Thickness:** 2.0MM

**Frame width:** 94MM

**Handle:** Customized non base safety Handle in Black and Sliver

**Hinge:** Customized flat open friction Hinge

**Hardware:** Customized version 180° Tilt and Turn Accessories

**Insulation strip:** Standard DERCHI insulation strip

**Opening Way:** Tilt and Turn/Inward opening

**Optional package:** New 48 Pack/New 88 Pack

**Sealing material:** EPDM rubber strip

**Available Size:** Opening Panel ( Width:480-850/Height:600-2400)

#### PRODUCT PROCESS

- Open the fan and fix the position using internal and external rubber strip technology
- Built in diamond mesh wire pressing process
- Whole frame two-component injection molding process

## E3N

### Inwards opening window

#### PRODUCT PARAMETERS

Water tightness	700 <sub>pa</sub>
Air tightness	1.2 m <sup>3</sup> /(m·h)
Wind pressure resistance	5K <sub>pa</sub>
Sound insulation performance	35 <sub>dB</sub>
U-Factor(U.S./1-P)	0.23
SHGC	0.20

**Glass:** Double Tempered Glass with argon ags  
5mm+27A+5mm  
(PVDF Aluminum Strip Between double glass)

**Profile:** 6063-T5 aluminum profile

**Profile Thickness:** 2.0MM

**Frame width:** 93MM

**Handle:** WEHAG Handle in Black and Sliver

**Hardware:** WEHAG 180° Tilt and Turn Accessories

**Insulation strip:** Standard DERCHI insulation strip

**Opening Way:** Tilt and Turn/Inward opening

**Optional package:** New 48 Pack/New 88 Pack

**Sealing material:** EPDM rubber strip

**Available Size:** Opening Panel ( Width:480-850/Height:600-2400)

#### PRODUCT PROCESS

- Open the fan and fix the position using internal and external rubber strip technology
- Built in diamond mesh wire pressing process
- Whole frame two-component injection molding process





## E6N

### Inwards opening window



#### PRODUCT PARAMETES

Water tightness	700 <sub>pa</sub>
Air tightness	1.2 m <sup>3</sup> /(m·h)
Wind pressure resistance	5K <sub>pa</sub>
Sound insulation performance	35 <sub>dB</sub>
U-Factor(U.S./1-P)	0.23
SHGC	0.20

**Glass:** Double Tempered Glass with argon ags  
5mm+27A+5mm  
(PVDF Aluminum Strip Between double glass)

**Profile:** 6063-T5 aluminum profile

**Profile Thickness:** 2.0MM

**Frame width:** 103MM

**Handle:** WEHAG Handle in Black and Sliver

**Hardware:** WEHAG 180° Tilt and Turn Accessories

**Insulation strip:** Standard BAIYUNYILE insulation strip

**Opening Way:** Tilt and Turn/Inward opening

**Optional package:** New 48 Pack/New 88 Pack

**Sealing material:** EPDM rubber strip

**Available Size:** Opening Panel ( Width:480-850/Height:600-2400)

#### PRODUCT PROCESS

- Open the fan and fix the position using internal and external rubber strip technology
- Built in diamond mesh wire pressing process
- Whole frame two-component injection molding process

## K5N

### Inwards opening window



#### PRODUCT PARAMETES

Water tightness	700 <sub>pa</sub>
Air tightness	1.2 m <sup>3</sup> /(m·h)
Wind pressure resistance	5K <sub>pa</sub>
Sound insulation performance	35 <sub>dB</sub>
U-Factor(U.S./1-P)	0.32
SHGC	0.25

**Glass:** Double Tempered Glass with argon ags  
6mm+16A+6mm  
(PVDF Aluminum Strip Between double glass)

**Profile:** 6063-T5 aluminum profile

**Profile Thickness:** 2.0MM

**Frame width:** 114MM

**Handle:** WEHAG Handle in Black and Sliver

**Hardware:** WEHAG 90° Tilt and Turn Accessories

**Insulation strip:** Standard DERCHI insulation strip

**Opening Way:** Tilt and Turn/Inward opening

**Sealing material:** EPDM rubber strip

**Available Size:** Opening Panel ( Width:510-850/Height:600-2400)

#### PRODUCT PROCESS

- Open the fan and fix the position using internal and external rubber strip technology
- Built in diamond mesh wire pressing process
- Whole frame two-component injection molding process
- Glass glue filling process at the connection of the center pillar



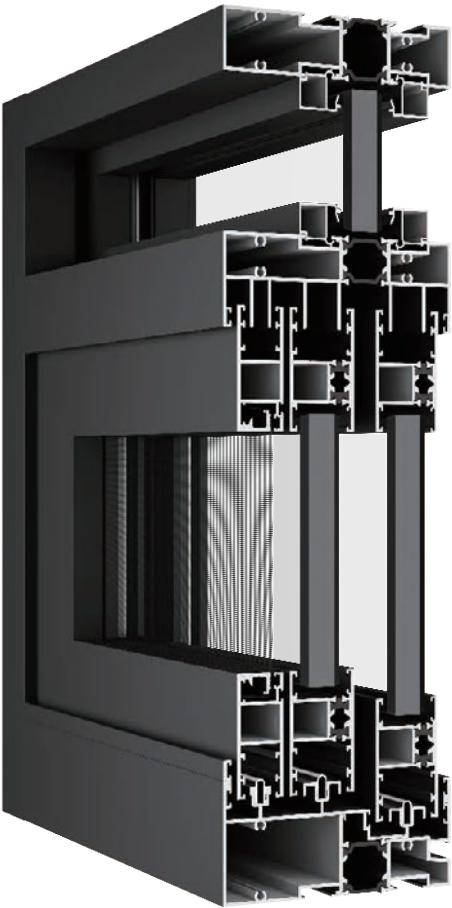


# SLIDING WINDOW SLIDING DOOR SERIES

- Three-way sealing design isobaric principle drainage
- National utility patent-six-point lock on all sides
- National Practical Patent-Built-in Diamond Wire Pressing Line



## E2T Thermal Break Sliding Window



### PRODUCT PARAMETES

Water tightness	450 <sub>pa</sub>
Air tightness	4.5 <sub>m³/(m·h)</sub>
Wind pressure resistance	5K <sub>pa</sub>
Sound insulation performance	30 <sub>dB</sub>
U-Factor(U.S./1-P)	0.32
SHGC	0.25

- Glass:** Double Tempered Glass with argon ags  
5mm+12A+5mm  
(PVDF Aluminum Strip Between double glass)
- Profile:** 6063-T5 aluminum profile
- Profile Thickness:** 1.8MM
- Frame width:** Two Tracks:94MM / Three Tracks:121MM
- FLUSH LOCK:** Side Mounted Hidden Automatic Hook Lock
- LOCK POINT:** Automatic Hook Lock
- Insulation strip:** Standard DERCHI insulation strip
- Opening Way:** Two Tracks / Three Tracks
- Sealing material:** EPDM rubber strip
- Available Size:** Opening Panel ( Width:350-1100/Height:500-2100)

### PRODUCT PROCESS

- The overall use of internal and external gluing process
- The track adopts an internal high and external low high low track design
- Embedded design of window sash material
- The exterior design of the window sash material structure does not have a cavity





Four Tracks

Five Tracks



Translating

## E5T

### Thermal Break Sliding Window



#### PRODUCT PARAMETERS

Water tightness	450 <sub>pa</sub>
Air tightness	4.5 <sub>m³/(m·h)</sub>
Wind pressure resistance	5K <sub>pa</sub>
Sound insulation performance	30 <sub>dB</sub>
U-Factor(U.S./1-P)	0.32
SHGC	0.25

**Glass:** Double Tempered Glass with argon ags  
5mm+12A+5mm  
(PVDF Aluminum Strip Between double glass)

**Profile:** 6063-T5 aluminum profile

**Profile Thinckness:** 1.8MM

**Frame width:** Four tracks:95MM/Five tracks:133MM

**FLUSH LOCK:** Side mounted concealed automatic lock

**Hardware:** Customized silent pulley

**Insulation strip:** Standard DERCHI insulation strip

**Opening Way:** Four tracks/Five tracks

**Sealing material:** EPDM rubber strip\Silicified wool strips

**Available Size:** Opening Panel ( Width:500~2000/Height:500~1400)

#### PRODUCT PROCESS

- The track adopts an internal high and external low high low track design
- Embedded design of window sash material
- The glass fan adopts a double row wheel design
- Strengthen the anti drop structure of handrails

## G41

### Translating Sealed window



#### PRODUCT PARAMETERS

Water tightness	700 <sub>pa</sub>
Air tightness	1.2 <sub>m³/(m·h)</sub>
Wind pressure resistance	5K <sub>pa</sub>
Sound insulation performance	35 <sub>dB</sub>
U-Factor(U.S./1-P)	0.27
SHGC	0.22

**Glass:** Double Tempered Glass with argon ags  
5mm+20A+5mm  
(PVDF Aluminum Strip Between double glass)

**Profile:** 6063-T5 aluminum profile

**Profile Thinckness:** frame 2.0MM ,sash 2.2MM

**Frame width:** 132MM

**Handle:** YALE There is a base handle

**Hardware:** YALE Side pressure hardware

**Insulation strip:** Standard BAIYUNYILE insulation strip

**Opening Way:** One opening and one fixing/Two opening and one fixing/  
Two opening and two fixing/Fixed up and down

**Sealing material:** EPDM rubber strip

**Available Size:** Opening Panel ( Width:600~1500/Height:100~2600)

#### PRODUCT PROCESS

- Open the fan and fix the position using internal and external rubber strip technology





# 135D

Sliding door

PRODUCT PARAMETES

Water tightness	350 <sub>pa</sub>
Air tightness	3.0 <sub>m³/(m·h)</sub>
Wind pressure resistance	4.5K <sub>pa</sub>
Sound insulation performance	32 <sub>dB</sub>
U-Factor(U.S./1-P)	0.38
SHGC	0.22

- Glass:** Double Tempered Glass with argon ags  
5mm+20A+5mm  
(PVDF Aluminum Strip Between double glass)
- Profile:** 6063-T5 aluminum profile
- Profile Thinckness:** frame 1.8MM , door leaf 1.6MM
- Frame width:** Two tracks 135mm / Three tracks 205mm
- Handle:** PAG Aluminum alloy hook lock/clasp
- Hardware:** 304 stainless steel single hook lock point lock seat
- Optional package:** New 47 Pack / 70 Pack / 75 Pack / 100 Pack
- Opening Way:** Two tracks/Three tracks
- Sealing material:** EPDM rubber strip
- Available Size:** Opening Panel ( Width:580-2000/Height:800-3000)

PRODUCT PROCESS

- The overall use of internal and external gluing process
- Embedded design of fan material
- The lock point lock seat is made of stainless steel material
- Floor drain drainage design

# 143

Sliding door

PRODUCT PARAMETES

Water tightness	300 <sub>pa</sub>
Air tightness	4.5 <sub>m³/(m·h)</sub>
Wind pressure resistance	4.5K <sub>pa</sub>
Sound insulation performance	30 <sub>dB</sub>
U-Factor(U.S./1-P)	0.28
SHGC	0.20

- Glass:** Double Tempered Glass with argon ags  
5mm+27A+5mm  
(PVDF Aluminum Strip Between double glass)
- Profile:** 6063-T5 aluminum profile
- Profile Thinckness:** 2.2MM
- Frame width:** Two tracks 143mm / Three tracks 217mm
- Handle:** PAG Aluminum alloy hook lock/clasp
- Hardware:** 304 stainless steel single hook lock point lock seat
- Insulation strip:** Standard DERCHI insulation strip
- Optional package:** New 47 Pack / 70 Pack / 75 Pack / 100 Pack
- Opening Way:** Two tracks/Three tracks
- Sealing material:** EPDM rubber strip
- Available Size:** Opening Panel ( Width:600-2500/Height:800-3000)

PRODUCT PROCESS

- The overall use of internal and external gluing process
- Embedded design of fan material
- Enhanced mid lift design
- Yarn fan thread pressing structure





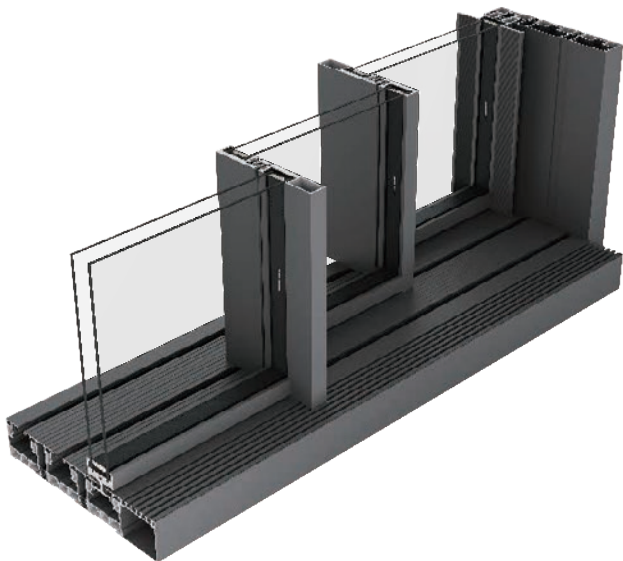
Two Tracks

Three Tracks



# Q15

## Heavy Sliding door



### PRODUCT PARAMETES

Water tightness	450 <sub>pa</sub>
Air tightness	4.5 <sub>m³/(m·h)</sub>
Wind pressure resistance	4.5K <sub>pa</sub>
Sound insulation performance	35 <sub>dB</sub>
U-Factor(U.S./1-P)	0.28
SHGC	0.20

**Glass:** Double Tempered Glass with argon ags  
6mm+25A+6mm  
(PVDF Aluminum Strip Between double glass)

**Profile:** 6063-T5 aluminum profile

**Profile Thinckness:** frame 2.0MM , door leaf 3.0MM

**Frame width:** Two Tracks:129MM

**LOCK POINT:** Panoramic door dedicated one letter lock

**Hardware:** Panoramic door integrated handle

**Insulation strip:** Standard BAIYUNYILE insulation strip

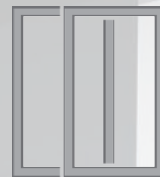
**Opening Way:** Two Tracks / Three Tracks

**Sealing material:** EPDM rubber strip

**Available Size:** Opening Panel ( Width:1300-4000/Height:2000-6000)

### PRODUCT PROCESS

- Design of Embedded Micro Seam Linear Track
- Design of high rail sunken hidden drainage
- The overlap is sealed with a strip of wool
- Seal the hooked edge with sealing tape



Two Tracks

# Q9

## Sliding door



### PRODUCT PARAMETES

Water tightness	700 <sub>pa</sub>
Air tightness	1.2 <sub>m³/(m·h)</sub>
Wind pressure resistance	5K <sub>pa</sub>
Sound insulation performance	38 <sub>dB</sub>
U-Factor(U.S./1-P)	0.28
SHGC	0.20

**Glass:** Double Tempered Glass with argon ags  
8mm+22A+8mm  
(PVDF Aluminum Strip Between double glass)

**Profile:** 6063-T5 aluminum profile

**Profile Thinckness:** 2.2MM

**Frame width:** 128.6MM

**Handle:** Integrated handle for panoramic door

**Hardware:** Special lock seat for panoramic door

**Optional package:** New 47 Pack / 70 Pack

**Opening Way:** Two tracks

**Sealing material:** EPDM rubber strip

**Available Size:** Opening Panel ( Width:1300-3000/Height:2000-4000)

### PRODUCT PROCESS

- Design of Embedded Micro Seam Linear Track
- Design of high rail sunken hidden drainage
- The overlap is sealed with a strip of wool
- Seal the hooked edge with sealing tape





Two Tracks

Three Tracks



# 103

Sliding door

## PRODUCT PARAMETERS

Water tightness	300 <sub>pa</sub>
Air tightness	4.5 <sub>m³/(m·h)</sub>
Wind pressure resistance	3K <sub>pa</sub>
Sound insulation performance	30 <sub>dB</sub>
U-Factor(U.S./I-P)	0.39
SHGC	0.25

**Glass:** 8MM tempered glass

**Profile:** 6063-T5 aluminum profile

**Profile Thickness:** frame 1.3MM , door leaf 2.0MM

**Frame width:** Two Tracks:103MM / Three Tracks:149MM

**Handle:** Extremely narrow specialized aluminum alloy handle

**Hardware:** Customized silent two wheel pulley

**Opening Way:** Two Tracks / Three Tracks

**Optional package:** New 32 Pack

**Sealing material:** EPDM rubber strip

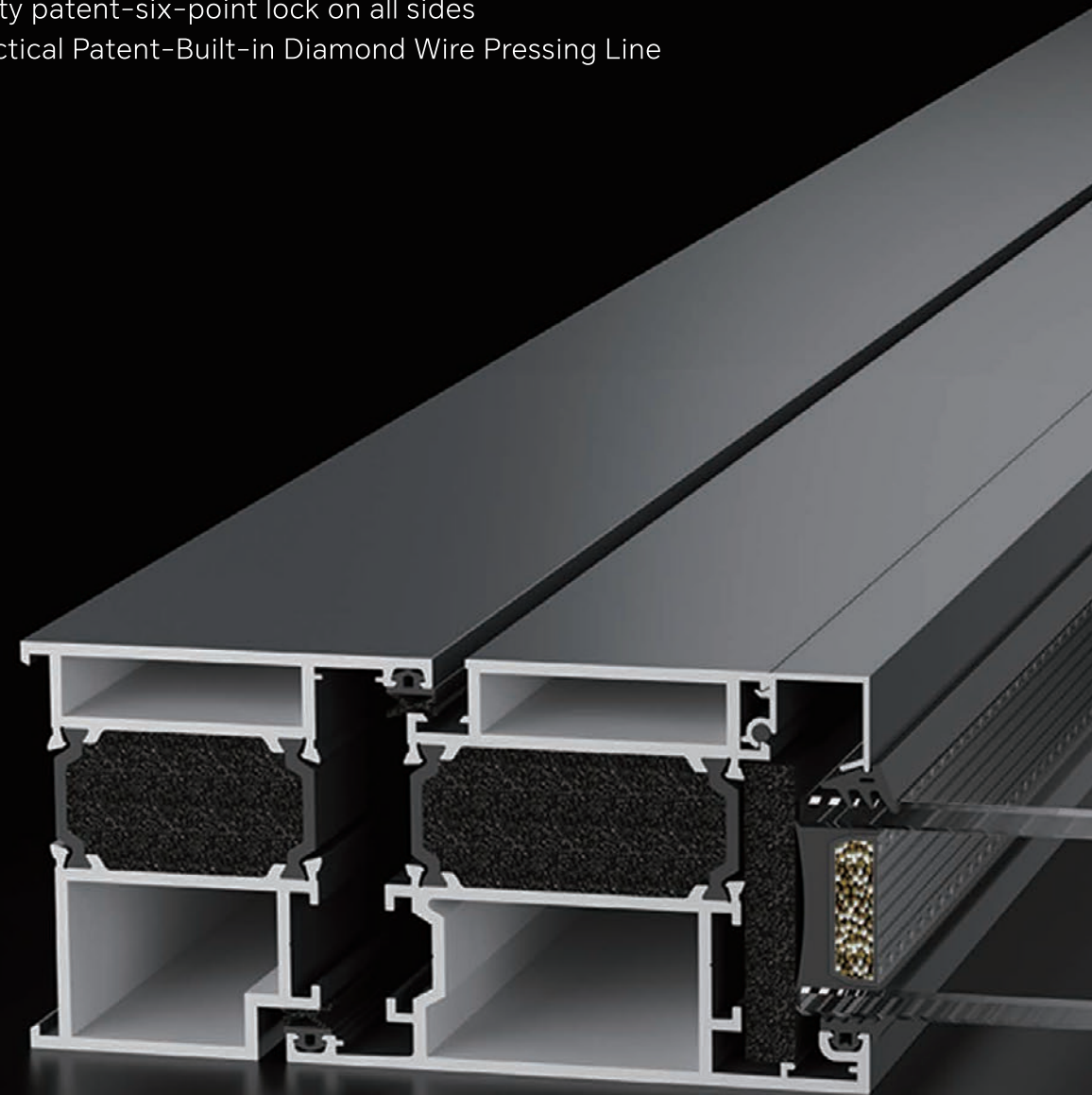
**Available Size:** Opening Panel ( Width:580-1200/Height:800-2600)

## PRODUCT PROCESS

- Dark glue process
- Narrow fan design

## SWING DOOR FOLDING DOOR SERIES

- Three-way sealing design isobaric principle drainage
- National utility patent-six-point lock on all sides
- National Practical Patent-Built-in Diamond Wire Pressing Line







# P50

## Swing door



### PRODUCT PARAMETES

Water tightness	300 <sub>pa</sub>
Air tightness	5 <sub>m³/(m·h)</sub>
Wind pressure resistance	3K <sub>pa</sub>
Sound insulation performance	37 <sub>dB</sub>
U-Factor(U.S./1-P)	0.39
SHGC	0.25

<b>Glass:</b>	double glazing:5mm+12A+5mm Single Glazed:8MM tempered glass
<b>Profile:</b>	6063-T5 aluminum profile
<b>Profile Thinckness:</b>	frame 1.45MM , door leaf 1.2MM
<b>Frame width:</b>	54MM
<b>Handle:</b>	DERCHI custom handle
<b>Hardware:</b>	DERCHI customized hinges
<b>Optional package:</b>	New 32 Pack
<b>Opening Way:</b>	Open externally and open internally
<b>Sealing material:</b>	EPDM rubber strip
<b>Available Size:</b>	Opening Panel ( Width:600-850/Height:1800-2500)

### PRODUCT PROCESS

- Opening the fan adopts gluing process
- fixing position adopts pressing glue strip process

# P103

## Interior Swing door



### PRODUCT PARAMETES

Water tightness	450 <sub>pa</sub>
Air tightness	4.5 <sub>m³/(m·h)</sub>
Wind pressure resistance	5K <sub>pa</sub>
Sound insulation performance	30 <sub>dB</sub>
U-Factor(U.S./1-P)	0.28
SHGC	0.20

<b>Glass:</b>	Double Tempered Glass with argon ags 5mm+27A+5mm (PVDF Aluminum Strip Between double glass)
<b>Profile:</b>	6063-T5 aluminum profile
<b>Profile Thinckness:</b>	2.0MM
<b>Frame width:</b>	103MM
<b>Handle:</b>	ShenZhen HOPE double-sided handle
<b>Hardware:</b>	ShenZhen HOPE column hinge
<b>Insulation strip:</b>	Standard BAIYUNYILE insulation strip
<b>Optional package:</b>	New 32 Pack
<b>Opening Way:</b>	Single door, double door, parent-child door
<b>Sealing material:</b>	EPDM rubber strip
<b>Available Size:</b>	Opening Panel ( Width:350-1100/Height:800-2800)

### PRODUCT PROCESS

- Opening the fan adopts gluing process
- fixing position adopts pressing glue strip process





78

## Folding door

### PRODUCT PARAMETERS

Water tightness	450 <sub>pa</sub>
Air tightness	1.8 <sub>m³/(m·h)</sub>
Wind pressure resistance	4.5K <sub>pa</sub>
Sound insulation performance	30 <sub>dB</sub>
U-Factor(U.S./1-P)	0.38
SHGC	0.22

**Glass:** Double Tempered Glass with argon gas  
5mm+27A+5mm  
(PVDF Aluminum Strip Between double glass)

**Profile:** 6063-T5 aluminum profile

**Profile Thickness:** 1.6MM

**Frame width:** 78MM

**Handle:** Kerssemberg Handle in Black or Silver

**Hinge:** Kerssemberg Hinge in Black or Silver

**Lock point:** Kerssemberg Specialized locking point

**Insulation strip:** Standard BAIYUNYILE insulation strip

**Optional package:** New 47 Pack/70 Pack/75 Pack/100 Pack

**Sealing material:** EPDM rubber strip

**Available Size:** Opening Panel ( Width:500-800/Height:1000-2800)

### PRODUCT PROCESS

· Adopting internal and external gluing process



80

## Folding door

### PRODUCT PARAMETERS

Water tightness	350 <sub>pa</sub>
Air tightness	1.8 <sub>m³/(m·h)</sub>
Wind pressure resistance	4.5K <sub>pa</sub>
Sound insulation performance	35 <sub>dB</sub>
U-Factor(U.S./1-P)	0.38
SHGC	0.22

**Glass:** Double Tempered Glass with argon gas  
5mm+20A+5mm  
(PVDF Aluminum Strip Between double glass)

**Profile:** 6063-T5 aluminum profile

**Profile Thickness:** 2.0MM

**Frame width:** 80MM

**Handle:** CMECH Handle in Black or Silver

**Hardware:** CMECH Hinge in Black or Silver

**Lock point:** CMECH Specialized locking point

**Insulation strip:** Standard BAIYUNYILE insulation strip

**Optional package:** New 47 Pack/70 Pack/75 Pack/100 Pack

**Sealing material:** EPDM rubber strip

**Available Size:** Opening Panel ( Width:500-850/Height:1900-3800)

### PRODUCT PROCESS

· Adopting internal and external gluing process

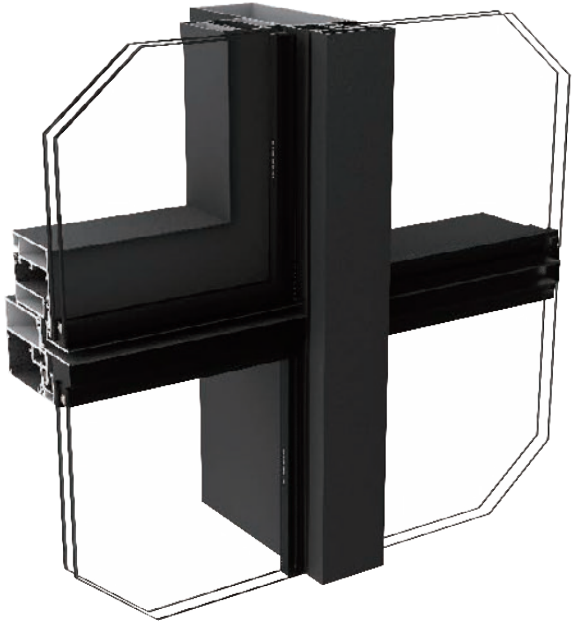




# OTHER PRODUCT SERIES



## 150 Curtain wall series



### PRODUCT PARAMETES

Water tightness	500 <sub>pa</sub>
Air tightness	1.8 <sub>m³/(m·h)</sub>
Wind pressure resistance	4K <sub>pa</sub>
Sound insulation performance	40 <sub>dB</sub>
U-Factor(U.S./1-P)	0.39
SHGC	0.22

- Glass:** Double Tempered Glass with argon ags  
6mm+12A+6mm(LOW-E)  
(PVDF Aluminum Strip Between double glass)
- Profile:** 6063-T5 aluminum profile
- Profile Thickness:** 3.0MM
- Frame width:** 205MM
- Handle:** KINLONG Handle
- Hardware:** Multi point lock with limit
- Insulation strip:** Standard BAIYUNYILE insulation strip
- Sealing material:** EPDM rubber strip
- Available Size:** Opening Panel ( Width:700-1500/Height:800-1500)

### PRODUCT PROCESS

- Vertical visible and horizontal hidden structure
- The glass panel adopts structural adhesive
- The same brand of weather resistant adhesive as the structural adhesive is used between glass and glass





# 120

## Sun Room

### PRODUCT PARAMETES

**Glass:** Roof:5mm+1.14PVB+5mm  
Side : 5mm+9A+5mm

**Profile:** 6063-T5 aluminum profile

**Profile Thinckness:** 3.0MM

**Available Size:** The maximum single grid on the top is 1square meter

### OTHER OPTIONAL ITEMS

- Select electric sunroof and steel gauze integrated electric sunroof
- Choose 150\*150 Roman columns
- Use 27A electric sunshade system (5+27A+5+1.14PVB+5)
- H-type remote control, H-type receiver, H-type 2A transformer



Flat top



Inclined roof



Diamond top



Triangular roof



Arc top



# 138

## Sun Room

### PRODUCT PARAMETES

**Glass:** Roof:5mm+1.14PVB+5mm  
Side : 5mm+9A+5mm

**Profile:** 6063-T5 aluminum profile

**Profile Thinckness:** 3.0MM

**Available Size:** The maximum single grid on the top is 1square meter

### OTHER OPTIONAL ITEMS

- Select electric sunroof and steel gauze integrated electric sunroof
- Choose 150\*150 Roman columns
- Use 27A electric sunshade system (5+27A+5+1.14PVB+5)
- H-type remote control, H-type receiver, H-type 2A transformer



Flat top



Inclined roof



Diamond top



Triangular roof



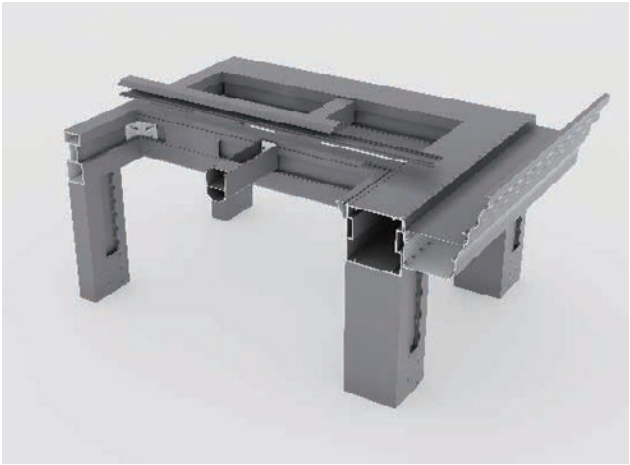
Arc top





# 150

## Sun Room



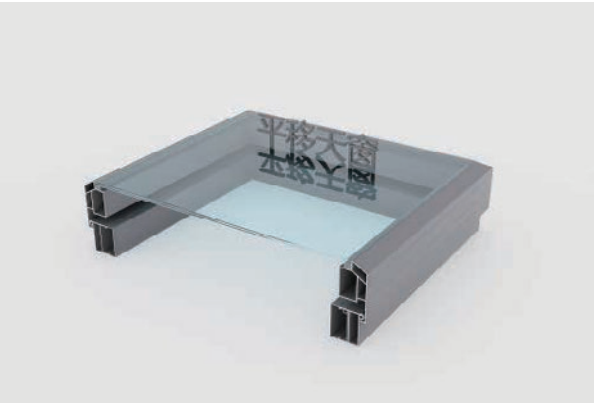
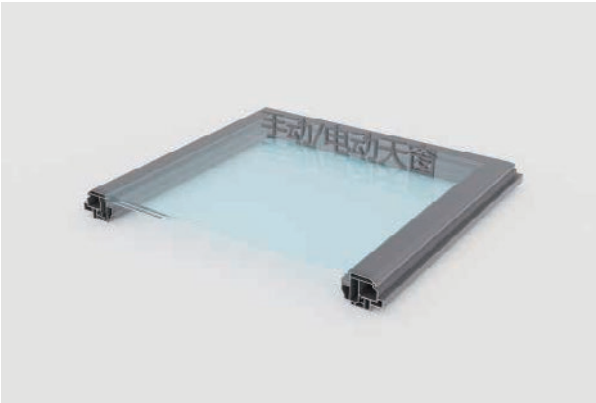
### PRODUCT PARAMETES

- Glass:** Roof:5mm+1.14PVB+5mm  
Side : 5mm+9A+5mm
- Profile:** 6063-T5 aluminum profile
- Profile Thinckness:** 4.0MM
- Available Size:** The maximum single grid on the top is 1square meter

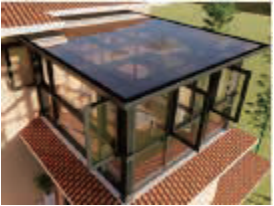
### OTHER OPTIONAL ITEMS

- Select electric sunroof and steel gauze integrated electric sunroof
- Choose 150\*150 Roman columns
- Use 27A electric sunshade system (5+27A+5+1.14PVB+5)
- H-type remote control, H-type receiver, H-type 2A transformer

# Skylight



Product type	Manual Sunroof	Power sunroof	Move the sunroof horizontally
Profile specifications	70*100*1.8mm	70*100*1.8mm	80*230*3.0mm
Processing technology	Seamless welding	Seamless welding	Seamless welding
Customized size	Single sash ≤ 1.5 m²	Single sash ≤ 1.5 m²	Width ≤ 4 meters
Glass configuration	Glass groove 25mm	Glass groove 25mm	Glass groove 27mm
Installation angle	0-90°	0-90°	0-10°
Standard configuration	Hardware stainless steel hinges/handles	External motor, remote control	Built in hidden motor and remote control



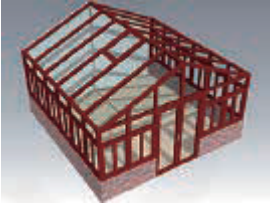
Flat top



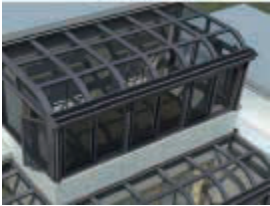
Inclined roof



Diamond top



Triangular roof



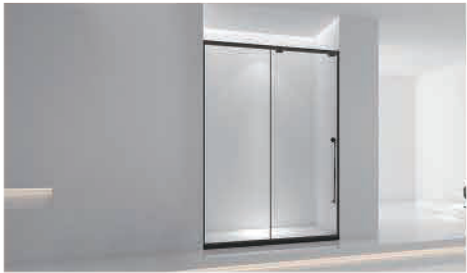
Arc top



# SHOWER ROOM SERIES



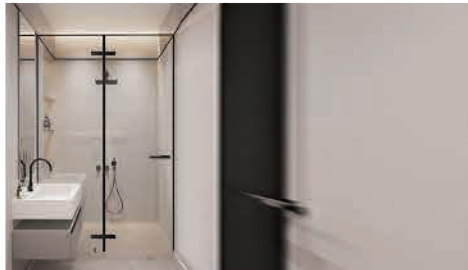
D851 Double sliding door



D853 One solid one live shower room



D854 One solid two linkage shower room



D856 One fixed one open shower room



D858 Two solid one live shower room



D859 T-shaped rotating shaft shower room



D860 Diamond hinge shower enclosure



D864 Diamond shaped sliding door shower room



D861 Diamond shower room



D865 Sector shower room



D866 One dual purpose shower room



D867 Fixed frame shower room

## PRODUCT PARAMETES

DESCRIPTION	Materials	304 stainless steel
	Color	Mirror light,Dumb gray,Gun Ash
	Hanger pulley	304 fine-cast double balance wheel
	Glass Thickness	8mm / 10mm Clear Glass
	Standard Height	2000mm
	Specification	Non-standard custom

## STAINLESS STEEL COLOR PLATE



Matt black



Titanium wire drawing



Gun Ash



Mirror light

## PVC SOLID WATER RETAINING STRIP



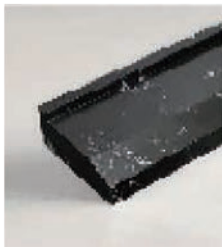
Matt black



Gun Ash



Cloud pulls gray



China black



China black



# ENTRANCE DOOR



Stars and rivers



The stars are shining



Moonlight shadow



Grand picture



Reflections



The clouds



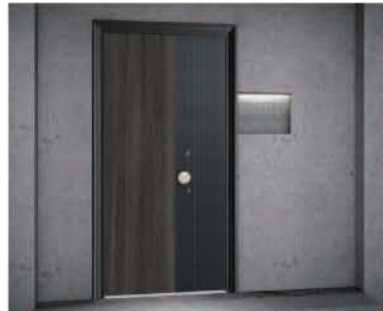
Longwei



A thousand miles of rivers and mountains



Dragon scale



Mori time



Purple Qis coming from the east



Kim was in full joy





# AUTOMATIC GARAGE DOORS

AUTOMATIC GARAGE DOORS

## PRODUCT PARAMETES

SERIES	Automatic Garage Doors
PROFILE THICKNESS	2.5mm aluminum profile thickness
CONTROL MODEL	Remote Control ( Standard),Manual
OPENER	800N/1000N/1200N/1500N/1800N (Based on doorway's size)
GLASS	5mm tempered glass ; Clear glass ; Frosted Glass (Standard)
HINGES	2.5mm plate galvanized steel
ROLLERS	Standard (2" or 3"), Heavy Duty (2" or 3")







ALUMINUM  
SHUTTER

ALUMINUM SHUTTER

PRODUCT PARAMETES

DESCRIPTION	ALUMINUM THICKNESS	1.4mm
-------------	--------------------	-------

PRODUCT PARAMETES

DESCRIPTION	ALUMINUM THICKNESS	1.4mm
	GLASS STANDARD	Double glazing 5mm+12A+5mm

GLASS LOUVRE

GLASS  
LOUVRE

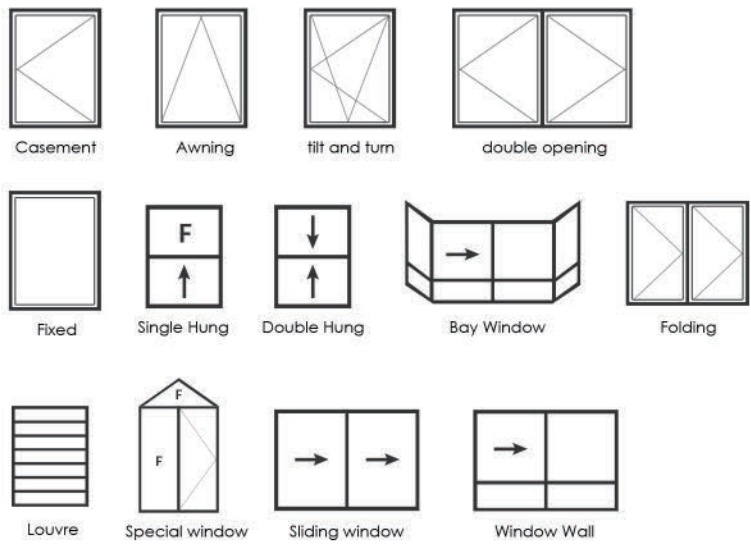




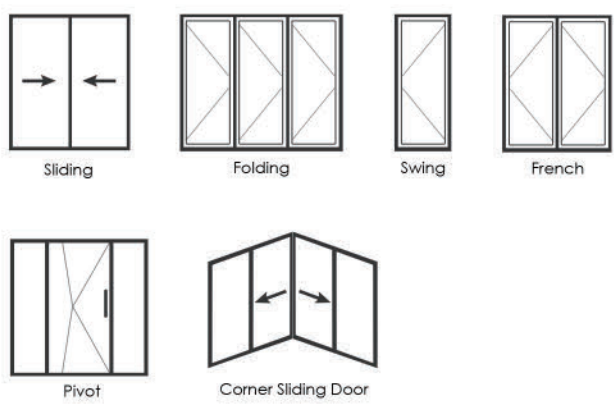
CUSTOMIZE  
ANY ALUMINUM  
DOORS AND  
WINDOWS  
DESIGN

Please send your drawings and  
requirements and we will customize  
them for you

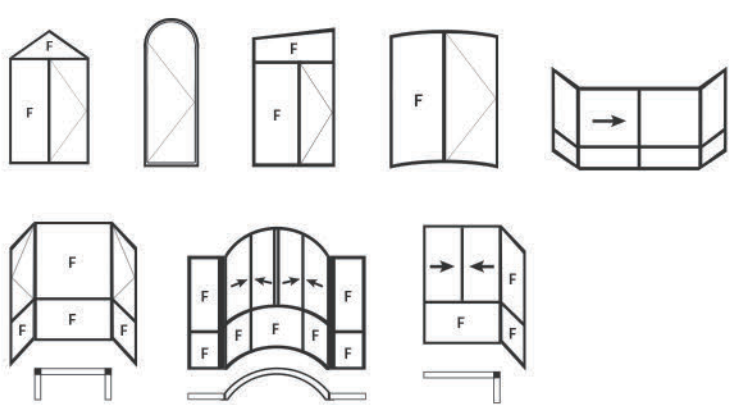
WINDOW



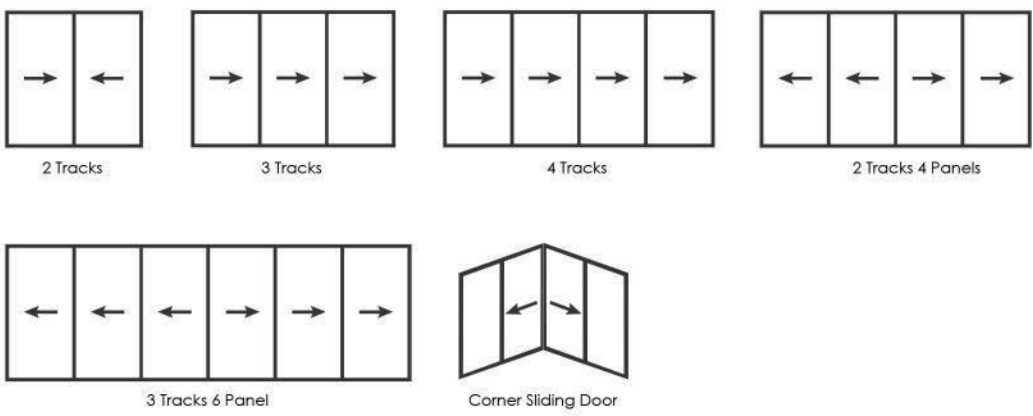
DOOR



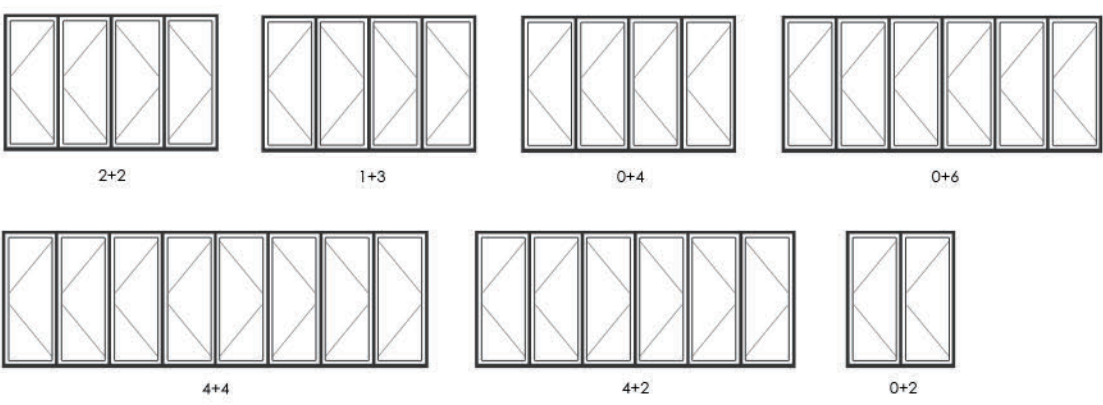
SPECIAL



SLIDING WINDOW / DOOR SERIES



FOLDING SERIES



SWING DOOR SERIES

